



저작자표시-비영리-변경금지 2.0 대한민국

이용자는 아래의 조건을 따르는 경우에 한하여 자유롭게

- 이 저작물을 복제, 배포, 전송, 전시, 공연 및 방송할 수 있습니다.

다음과 같은 조건을 따라야 합니다:



저작자표시. 귀하는 원저작자를 표시하여야 합니다.



비영리. 귀하는 이 저작물을 영리 목적으로 이용할 수 없습니다.



변경금지. 귀하는 이 저작물을 개작, 변형 또는 가공할 수 없습니다.

- 귀하는, 이 저작물의 재이용이나 배포의 경우, 이 저작물에 적용된 이용허락조건을 명확하게 나타내어야 합니다.
- 저작권자로부터 별도의 허가를 받으면 이러한 조건들은 적용되지 않습니다.

저작권법에 따른 이용자의 권리는 위의 내용에 의하여 영향을 받지 않습니다.

이것은 [이용허락규약\(Legal Code\)](#)을 이해하기 쉽게 요약한 것입니다.

[Disclaimer](#)

의학석사 학위논문

**Perioperative blood transfusion as a
significant predictor of biochemical
recurrence and survival after radical
prostatectomy in patients with
prostate cancer**

근치적 전립선 전적출술을 시행 받은
전립선암 환자에서 술 중 수혈 여부가
술 후 생존에 미치는 영향

2016 년 8 월

서울대학교 대학원

의학과 비뇨기과학 전공

김 정 권

근치적 전립선 전적출술을 시행 받은
전립선암 환자에서 술 중 수혈 여부가
술 후 생존에 미치는 영향

지도 교수 곽 철

이 논문을 의학석사 학위논문으로 제출함

2016 년 8 월

서울대학교 대학원

의학과 비뇨기과학 전공

김 정 권

김정권의 의학석사 학위논문을 인준함

2016 년 8 월

위 원 장 (인)

부위원장 (인)

위 원 (인)

Abstract (English)

Introduction: There have been conflicting reports regarding the association of perioperative blood transfusion (PBT) with oncologic outcomes including recurrence rates and survival outcomes in prostate cancer. We aimed to evaluate whether perioperative blood transfusion (PBT) affects biochemical recurrence-free survival (BRFS), cancer-specific survival (CSS), and overall survival (OS) following radical prostatectomy (RP) for patients with prostate cancer.

Materials and Methods: A total of 2,713 patients who underwent RP for clinically localized prostate cancer between 1993 and 2014 were retrospectively analyzed. We performed a comparative analysis based on receipt of transfusion (PBT group vs. no-PBT group) and transfusion type (autologous PBT vs. allogeneic PBT). Univariate and multivariate Cox-proportional hazard regression analysis were performed to evaluate variables associated with BRFS, CSS, and OS. The Kaplan-Meier method was used to calculate survival estimates for BRFS, CSS, and OS, and log-rank test was used to conduct comparisons between the groups.

Results: The number of patients who received PBT was 440 (16.5%). Among these patients, 350 (79.5%) received allogeneic transfusion and the

other 90 (20.5%) received autologous transfusion. In a multivariate analysis, allogeneic PBT was found to be statistically significant predictors of BRFS, CSS, and OS; conversely, autologous PBT was not. The Kaplan-Meier survival analysis showed significantly decreased 5-year BRFS (79.2% vs. 70.1%, log-rank, $p = 0.001$), CSS (98.5% vs. 96.7%, log-rank, $p=0.012$), and OS (95.5% vs. 90.6%, log-rank, $p < 0.001$) in the allogeneic PBT group compared to the no-allogeneic PBT group. In the autologous PBT group, however, none of these were statistically significant compared to the no-autologous PBT group.

Conclusions: We found that allogeneic PBT was significantly associated with decreased BRFS, CSS, and OS. This provides further support for the immunomodulation hypothesis for allogeneic PBT.

Keywords: Blood transfusion; Prostate cancer; Outcomes; Radical prostatectomy

Student Number: 2011-23742

Contents

Abstract (English)	1
Contents.....	3
List of tables and figures.....	4
Introduction	6
Materials and Methods	8
Results.....	11
Discussion	21
Conclusions	27
References	28
Abstract (Korean).....	34

List of tables and figures

Table 1. Clinicopathological parameters of the comparative analysis results according to the presence or absence of perioperative blood transfusion	12
Table S1. Clinicopathological parameters of the comparative analysis results according to the receipt of allogeneic and autologous perioperative blood transfusion (PBT).....	14
Table 2. Multivariate Cox regression analyses for evaluating variables associated with BCR-free survival (BRFS), cancer-specific survival (CSS), and overall survival (OS).....	16
Figure 1. Kaplan-Meier survival curves for (A) BCR-free survival (BRFS), (B) Cancer-specific survival (CSS) and (C) Overall survival (OS) according to the administration of allogeneic perioperative blood transfusion (PBT).....	18
Figure 2. Kaplan-Meier survival curves for (A) BCR-free survival (BRFS), (B) Cancer-specific survival (CSS) and (C) Overall survival (OS) according to the administration of allogeneic perioperative blood transfusion (PBT)	19
Table S2. Multivariate logistic regression analyses for evaluating variables associated with EBL ($\geq 1000\text{ml}$ vs. $<1000\text{ml}$) in ORP	

group20

Introduction

Transfusion-related immunomodulation (TRIM), including alloimmunization, tolerance, and immunosuppression [1], has been postulated to explain the association between perioperative blood transfusion (PBT) and survival in a number of malignancies, including colon, esophageal, and hepatic carcinomas [2-4]. However, it is difficult to conclude whether these oncologic outcomes are secondary to PBT itself or whether PBT serves as a surrogate marker for clinically important variables that may affect oncologic prognosis. Previous study suggested the several reasons – including obscuring the operative field, limiting anatomical visualization, and preventing full excision the tumor – to hypotheses for why an excessive blood loss followed by PBT might be correlated with the oncologic outcomes [5].

In urological cancers, there have been conflicting reports regarding the association of PBT with oncologic outcomes including recurrence rates and survival outcomes [6-14]. Specifically for radical prostatectomy (RP), to the best of our knowledge, there have been over 10 retrospective studies that examining the association between PBT and recurrence and/or survival after RP for prostate cancer [7-9, 15-23]. About one third of the studies suggested that PBT resulted in increased cancer recurrence and/or mortality [9, 20, 21, 23], while the others showed no significant associations [7, 8, 15-19, 22].

In the current study, we investigated whether PBT (autologous vs. allogeneic) affects biochemical recurrence-free survival (BRFS), cancer-specific survival (CSS) and overall survival (OS) after RP in patients with prostate cancer, by using a large tertiary referral center RP database.

Materials and Methods

Study cohort

A total of 2,713 patients who underwent RP (open or laparoscopic or robot-assisted laparoscopic) for clinically localized prostate cancer between 1993 and 2014 at our institution were included in this study. Clinical data in the medical records were retrospectively reviewed. 46 cases were excluded because of insufficient clinical data; a total of 2,667 cases were investigated.

Acquisition and definition of data

RPs were conducted by several surgeons during the involved period. All pathological specimens were evaluated by a staff pathologist who had genitourinary expertise. To perform a comparative analysis based on receipt of transfusion (PBT group vs. no-PBT group) and transfusion type (autologous PBT vs. allogeneic PBT), the following variables were included in current analysis: age, body mass index (BMI), D'Amico risk classification, preoperative hemoglobin (Hb), neoadjuvant androgen deprivation therapy (ADT), operative type (Open vs. laparoscopic vs. Robotic), conduction of pelvic lymph node dissection (PLND) and neurovascular bundle (NVB) saving, operative time, estimated blood loss (EBL), preoperative prostate specific antigen (PSA) level, pathologic tumor (pT) stage and Gleason score (pGS), lymph node (LN) status, total number of removed LN,

number of positive LN, extracapsular extension (ECE), seminal vesicle invasion (SVI), surgical margin status (PSM), adjuvant ADT, adjuvant radiotherapy (RT), salvage RT, follow-up duration, biochemical recurrence (BCR) rate, CSS rate, and OS rate. The pathologic T stage was categorized as \leq pT2 or \geq pT3 (organ confined disease, or not), and pathologic GS was classified as $GS \leq 8$ or $GS > 8$. Subgroup analysis was also performed in the patients who underwent open RP with EBL \geq 1000ml to adjust for potential confounding factors.

According to our standardized postoperative protocol, we evaluated serum PSA level every 3 months for 1 year, then every 6 months for 4 additional years, followed by annually thereafter. BCR was defined as either two consecutive increasing PSA values of > 0.2 ng/mL or the conduction of adjuvant therapy during the postoperative follow-up period.

PBT was defined as transfusion of allogeneic or autologous red blood cells (RBCs) during RP or within the postoperative hospitalization. Transfusion of other blood products, including fresh frozen plasma or platelets, was not included in this analysis. The administration of PBT was based on the volition of the physicians. No institutional intraoperative or postoperative standardized criteria were used for transfusion.

Statistical analyses

The clinicopathological characteristics were compared between PBT group and no-PBT group using chi-squared test for categorical variables, and independent t-

test or Mann-Whitney U test for continuous variables. The Kaplan-Meier method was used to calculate survival estimates for BRFS, CSS, and OS, and log-rank test was used to conduct comparisons between the groups. Univariate and multivariate Cox-proportional hazard regression analysis were performed to evaluate significant variables associated with BRFS, CSS, and OS. The following factors were included in the analysis: age, BMI, D'Amico risk classification, preoperative Hb, neoadjuvant ADT, operative type, conduction of PLND and NVB saving, operative time, EBL, preoperative PSA, pathologic T stage and GS, LN status, total number of removed LN, number of positive LN, ECE, SVI, PSM, adjuvant ADT and RT, salvage RT, follow-up duration, PBT, allogeneic PBT, and autologous PBT. All statistical analyses were performed using commercially available software (IBM SPSS Statistics ver. 21.0, Armonk, NY, USA) and two-sided p-values of <0.05 were considered statistically significant.

Results

Mean patient age was 66.2 ± 6.9 years, and the median follow-up period was 60.2 (range 0-261) months. The number of patients who received PBT was 440 (16.5%). Among these patients, 350 (79.5%) received allogeneic with or without autologous transfusion (allogeneic PBT group), and the other 90 (20.5%) received only autologous transfusion (autologous PBT group). In the comparative analysis of clinicopathological features between the PBT group and no-PBT group, patients in the PBT group showed a higher rate of high-risk patients according to D'Amico risk classification, a lower preoperative Hb level, a higher rate of open RP (ORP) compared to laparoscopic (LRP) or robotic RP (RARP), a higher frequency of PLND, a lower frequency of NVB saving, a longer operative time, a higher EBL, higher pathologic GS, a larger number of removed LNs, a higher frequency of salvage RT, longer follow-up duration and higher rates of BCR, CSS, and OS in comparison with the no-PBT group (Table 1). In subgroup analysis comparing the allogeneic and autologous PBT group, patients in allogeneic PBT group showed younger age ($p = 0.001$), a higher rate of LRP/RARP compared to ORP ($p = 0.007$), a high frequency of PLND ($p < 0.001$), a longer operative time ($p < 0.001$), a higher EBL ($p < 0.001$), a higher frequency of salvage RT ($p < 0.001$), higher rates of BCR ($p < 0.001$), cancer-specific death ($p = 0.014$), and all-cause death ($p = 0.001$). The other pathologic variables, however, were not significantly different

between the two groups (Table S1). In addition, no significant differences were observed based on categorization of the number of transfused units (1 unit vs. 2 units vs. more than 2 units, data not shown).

Table 1. Clinicopathological parameters of the comparative analysis results according to the presence or absence of perioperative blood transfusion

	PBT	No-PBT	p-value
Patient n (%) = 2667	440(16.5%)	2227(83.5%)	
Allogeneic PBT*, n (%)	354(80.5%)		
Autologous PBT, n (%)	86(19.5%)		
Age, yr, median (SD)	66.2(7.4)	66.3(6.7)	0.752
BMI, median (SD)	24.2(2.7)	24.3(2.7)	0.667
PLND, n(%)			<0.001
Done	164(38.3%)	427(20.4%)	
Not done	264(61.7%)	1666(79.6%)	
NVB saving, n(%)			0.003
Done	66(21.7%)	383(30.2%)	
Not done	238(78.3%)	887(69.8%)	
Operative time, min, median (SD)	188.1(82.1)	173.2(110.3)	0.007
EBL, ml, median (SD)	1165.8(1007.3)	591.1(411.1)	<0.001
Preoperative PSA, ng/ml	13.5(17.8)	12.6(18.9)	0.368
Pathologic Gleason Score, n (%)			0.001
≤ 8	353(84.4%)	1897(90.1%)	
>8	65(15.6%)	208(9.9%)	
Pathologic T stage, n(%)			0.889
≤ pT2	266(60.5%)	1336(60.1%)	
≥pT3	174(39.5%)	887(39.9%)	

(Continued)

Table 1. (Continued)

	PBT	No-PBT	p-value
Lymph node status, n(%)			0.546
Nx/N0	422(95.9%)	2148(96.5%)	
N1	18(4.1%)	78(3.5%)	
ECE, n(%)			0.477
Absent	286(65.0%)	1404(63.2%)	
Present	154(35.0%)	817(36.8%)	
PSM, n(%)			0.499
Absent	278(63.2%)	1442(64.9%)	
Present	162(36.8%)	781(35.1%)	
Follow-up, months, median (SD)	79.4(54.2)	56.5(34.4)	<0.001
Biochemical recurrence, n (%)			<0.001
No	338(76.8%)	1882(84.7%)	
Yes	102(23.2%)	341(15.3%)	

* allogeneic with/without autologous PBT

BMI: body mass index, EBL: estimated blood loss, ECE: extracapsular extension, NVB: neurovascular bundle, PLND: pelvic lymph node dissection, PSM: positive surgical margin, PBT: perioperative blood transfusion, SVI: seminal vesical invasion.

Table S1. Clinicopathological parameters of the comparative analysis results according to the receipt of allogeneic and autologous perioperative blood transfusion (PBT)

	Allogeneic PBT*	Autologous PBT	p-value
Patient n (%) = 440	350 (79.5 %)	90 (20.5 %)	
Age, yr, median (SD)	65.6 (7.6)	68.6 (6.1)	0.001
BMI, median (SD)	24.1 (2.7)	24.6 (2.7)	0.154
Preoperative Hb, g/d L, mean (SD)	13.6 (1.7)	13.9 (1.2)	0.213
Neoadjuvant ADT, n (%)			0.776
Done	16 (4.6 %)	3 (3.3 %)	
Not done	334 (95.4 %)	87 (96.7 %)	
Operative type, n (%)			0.007
Open	305 (87.2 %)	87 (96.7 %)	
Laparoscopic/Robotic	45 (12.8 %)	3 (3.3 %)	
PLND, n (%)			<0.001
Not done	185 (54.7 %)	79 (87.8 %)	
Done	153 (45.3 %)	11 (12.2 %)	
NVB saving, n(%)			0.232
Not done	173 (80.1 %)	65 (73.9 %)	
Done	43 (19.9 %)	23 (26.1 %)	
Operative time, min, median (IQR)	201.3 (81.1)	136.8 (63.1)	<0.001
EBL, ml, median (SD)	1244.3 (1075.4)	865.8 (604.1)	<0.001
Preoperative PSA, ng/ml	12.8 (16.1)	16.1 (23.0)	0.212
Pathologic Gleason Score, n (%)			0.411
≤ 8	282 (85.2 %)	71 (81.6 %)	
>8	49 (14.8 %)	16 (18.4 %)	
Pathologic T stage, n (%)			0.287
≤ pT2	216 (61.7 %)	50 (55.6 %)	
≥pT3	134 (38.3 %)	40 (44.4 %)	
Lymph node status, n (%)			0.167
Nx/N0	388 (96.6 %)	84 (93.3 %)	
N1	12 (3.4 %)	6 (6.7 %)	
Total number of removed lymph nodes, mean (SD)	4.0 (5.7)	3.0 (6.3)	0.137
Number of positive lymph nodes, mean (SD)	0.06 (0.4)	0.14 (0.7)	0.249
ECE, n (%)			0.901
Absent	228 (65.1 %)	58 (64.4 %)	
Present	122 (34.9 %)	32 (35.6 %)	
SVI, n (%)			0.570
Absent	300 (85.7 %)	75 (83.3 %)	
Present	50 (14.3 %)	15 (16.7 %)	
PSM, n (%)			0.093
Absent	228 (65.1 %)	50 (55.6 %)	
Present	122 (34.9 %)	40 (44.4 %)	
Adjuvant ADT, n (%)			0.318
Done	13 (3.7 %)	1 (1.1 %)	
Not done	337 (96.3 %)	89 (98.9 %)	
Adjuvant radiotherapy, n (%)			0.208
Done	10 (3.1 %)	1 (1.1 %)	
Not done	340 (96.9 %)	89 (98.9 %)	

(Continued)

Table S1. (Continued)

	Allogeneic PBT*	Autologous PBT	p-value
Salvage radiotherapy, n (%)			<0.001
Done	68 (19.4 %)	3 (3.3 %)	
Not done	282 (80.6 %)	87 (96.7 %)	
Follow-up, months, median (SD)			
Biochemical recurrence, n (%)			<0.001
No	253 (72.3 %)	85 (94.4 %)	
Yes	97 (27.7 %)	5 (5.6 %)	
CSS result, n (%)			0.014
— Alive or death from other causes	333 (95.1 %)	88 (97.8 %)	
Cancer-specific death	17 (4.9 %)	2 (2.2 %)	
OS result, n (%)			0.001
Alive	300 (85.7 %)	88 (97.8 %)	
All-cause death	50 (14.3 %)	2 (2.2 %)	

* allogeneic with/without autologous PBT

ADT: androgen deprivation therapy, BMI: body mass index, CSS: cancer-specific survival, EBL: estimated blood loss, ECE: extracapsular extension, Hb: hemoglobin, NVB: neurovascular bundle, OS: overall survival, PLND: pelvic lymph node dissection, PSM: positive surgical margin, PBT: perioperative blood transfusion, SVI: seminal vesical invasion.

Oncologic outcomes

On using a multivariate Cox regression analysis, D'Amico risk classification, pathologic T stage, pathologic GS, PSM, and allogeneic PBT were found to be statistically significant predictors of BRFS (Table 2). Additionally, age, D'Amico risk classification, pathologic GS, SVI, follow-up duration, and allogeneic PBT were identified as significant predictors of CSS (Table 2), while age, D'Amico risk classification, pathologic GS, SVI, follow-up duration, PBT, and allogeneic PBT were found to be significant predictors of OS (Table 2). Conversely, autologous PBT was not identified as significant predictor in either univariate or multivariate

analysis for BRFS, CSS, and OS. The Kaplan-Meier survival analysis showed significantly decreased BRFS, CSS, and OS in the allogeneic PBT group compared to the no-allogeneic PBT group (Figure 1). In the autologous PBT group, however, none of these were statistically significant compared to the no-autologous PBT group (Figure 2).

Table 2. Multivariate Cox regression analyses for evaluating variables associated with BCR-free survival (BRFS), cancer-specific survival (CSS), and overall survival (OS)

	BRFS ^o		CSS ^o		OS ^o	
	HR (95% CI) ^o	p-value ^o	HR (95% CI) ^o	p-value ^o	HR (95% CI) ^o	p-value ^o
Age ^o	1.004 ^o (0.988-1.021) ^o	0.590 ^o	1.088 ^o (1.005-1.177) ^o	0.037 ^o	1.064 ^o (1.025-1.104) ^o	0.001 ^o
BMI ^o	0.989 ^o (0.950-1.029) ^o	0.577 ^o	0.902 ^o (0.737-1.104) ^o	0.316 ^o	0.929 ^o (0.853-1.011) ^o	0.089 ^o
D'Amico classification ⁺ , n (%) ^o						
Low - risk ^o	Reference ^o		Reference ^o		Reference ^o	
Intermediate - risk ^o	2.036 ^o (1.573-2.637) ^o	<0.001 ^o	4.030 ^o (2.615-16.516) ^o	0.001 ^o	1.535 ^o (1.007-2.340) ^o	0.046 ^o
High - risk ^o	2.430 ^o (1.857-3.180) ^o	<0.001 ^o	6.713 ^o (2.704-25.734) ^o	0.001 ^o	2.226 ^o (1.449-3.421) ^o	<0.001 ^o
Preoperative Hb ^o	1.005 ^o (0.998-1.012) ^o	0.150 ^o	0.669 ^o (0.357-1.253) ^o	0.209 ^o	0.725 ^o (0.470-1.119) ^o	0.146 ^o
Neoadjuvant ADT ^o	1.711 ^o (0.536-5.467) ^o	0.365 ^o	2.270 ^o (0.534-4.656) ^o	0.465 ^o	1.890 ^o (0.199-17.916) ^o	0.579 ^o
Operative type ^o						
Open ^o	Reference ^o		Reference ^o		Reference ^o	
Laparoscopic/Robotic ^o	0.788 ^o (0.592-1.049) ^o	0.102 ^o	1.888 ^o (0.539-6.605) ^o	0.320 ^o	0.662 ^o (0.362-1.213) ^o	0.182 ^o
PLND ^o	1.282 ^o (0.957-1.717) ^o	0.095 ^o	1.024 ^o (0.265-3.960) ^o	0.972 ^o	0.555 ^o (0.268-1.151) ^o	0.114 ^o
NVB saving ^o	0.858 ^o (0.629-1.172) ^o	0.336 ^o	1.070 ^o (0.297-3.856) ^o	0.918 ^o	1.301 ^o (0.660-2.564) ^o	0.447 ^o
Operative time ^o	1.000 ^o (0.999-1.001) ^o	0.506 ^o	1.001 ^o (0.999-1.003) ^o	0.166 ^o	1.001 ^o (1.000-1.002) ^o	0.555 ^o
EBL ^o	1.000 ^o (1.000-1.000) ^o	0.971 ^o	1.000 ^o (1.000-1.001) ^o	<0.001 ^o	1.000 ^o (1.000-1.000) ^o	0.007 ^o
Preoperative PSA ^o	1.005 ^o (0.998-1.012) ^o	0.150 ^o	1.091 ^o (1.006-1.180) ^o	0.023 ^o	1.001 ^o (0.991-1.011) ^o	0.807 ^o
Pathologic T stage ^o						
≤pT2 ^o	Reference ^o		Reference ^o		Reference ^o	
≥pT3 ^o	2.517 ^o (1.488-4.257) ^o	0.001 ^o	1.039 ^o (0.080-13.519) ^o	0.976 ^o	1.315 ^o (0.464-3.725) ^o	0.606 ^o
Pathologic GS ^o						
≤ 8 ^o	Reference ^o		Reference ^o		Reference ^o	
>8 ^o	1.625 ^o (1.216-2.171) ^o	0.001 ^o	6.967 ^o (2.590-18.744) ^o	<0.001 ^o	1.507 ^o (1.014-2.246) ^o	0.042 ^o
LN status ^o						
Nx/N0 ^o	Reference ^o		Reference ^o		Reference ^o	
N1 ^o	0.608 ^o (0.296-1.250) ^o	0.176 ^o	4.183 ^o (0.766-22.847) ^o	0.099 ^o	1.148 ^o (0.474-2.781) ^o	0.760 ^o

Table 2. (Continued)

	BRFS ^o		CSS ^o		OS ^o	
	HR (95% CI) ^o	p-value ^o	HR (95% CI) ^o	p-value ^o	HR (95% CI) ^o	p-value ^o
Total number of removed LN ^o	1.011 ^o	0.344 ^o	0.872 ^o	0.055 ^o	0.964 ^o	0.222 ^o
Number of positive LN ^o	(0.988-1.035) ^o		(0.759-1.003) ^o		(0.909-1.022) ^o	
	1.100 ^o	0.675 ^o	1.385 ^o	0.097 ^o	1.098 ^o	0.636 ^o
	(0.865-1.400) ^o		(0.943-2.035) ^o		(0.745-1.619) ^o	
ECE ^o	0.742 ^o	0.221 ^o	3.418 ^o	0.265 ^o	1.235 ^o	0.665 ^o
	(0.460-1.196) ^o		(0.394-29.670) ^o		(0.475-3.213) ^o	
SVI ^o	0.996 ^o	0.983 ^o	6.973 ^o	0.001 ^o	2.003 ^o	0.015 ^o
	(0.707-1.403) ^o		(2.220-21.898) ^o		(1.147-3.500) ^o	
PSM ^o	1.570 ^o	<0.001 ^o	1.096 ^o	0.883 ^o	1.384 ^o	0.150 ^o
	(1.239-1.990) ^o		(0.325-3.698) ^o		(0.890-2.153) ^o	
Adjuvant ADT ^o	0.579 ^o	0.093 ^o	0.596 ^o	0.632 ^o	0.637 ^o	0.371 ^o
	(0.306-1.096) ^o		(0.072-4.949) ^o		(0.237-1.712) ^o	
Adjuvant RT ^o	1.273 ^o	0.596 ^o	2.892 ^o	0.053 ^o	0.609 ^o	0.563 ^o
	(0.521-3.111) ^o		(0.988-8.464) ^o		(0.113-3.275) ^o	
Salvage RT ^o			0.545 ^o	0.380 ^o	0.832 ^o	0.551 ^o
			(0.141-2.112) ^o		(0.455-1.523) ^o	
Follow-up duration ^o	1.003 ^o	0.144 ^o	0.967 ^o	<0.001 ^o	0.956 ^o	<0.001 ^o
	(0.999-1.006) ^o		(0.952-0.983) ^o		(0.947-0.964) ^o	
PBT ^o	1.235 ^o	0.120 ^o	2.362 ^o	0.071 ^o	1.950 ^o	0.006 ^o
	(0.946-1.612) ^o		(0.929-6.006) ^o		(1.209-3.145) ^o	
Autologous PBT ^o	1.351 ^o	0.095 ^o	2.722 ^o	0.142 ^o	1.040 ^o	0.895 ^o
	(0.949-1.924) ^o		(0.715-10.361) ^o		(0.580-1.864) ^o	
Allogeneic PBT* ^o	1.341 ^o	0.040 ^o	4.634 ^o	0.004 ^o	2.308 ^o	0.001 ^o
	(1.013-1.775) ^o		(1.618-13.273) ^o		(1.403-3.799) ^o	

* allogeneic with/without autologous PBT

⁺ Low-risk: PSA ≤ 10, Gleason score ≤ 6, and clinical stage T1-2a, Intermediate-risk: 10 < PSA < 20, Gleason score 7, or clinical stage T2b, High-risk: PSA ≥ 20, Gleason score ≥ 8, or clinical stage T2c-3a

ADT: androgen deprivation therapy, BMI: body mass index, CSS: cancer-specific survival, EBL: estimated blood loss, ECE: extracapsular extension, Hb: hemoglobin, LN: lymph node, NVB: neurovascular bundle, OS: overall survival, PLND: pelvic lymph node dissection, PSA: prostate-specific antigen, PSM: positive surgical margin, PBT: perioperative blood transfusion, RT: radiotherapy, SVI: seminal vesical invasion.

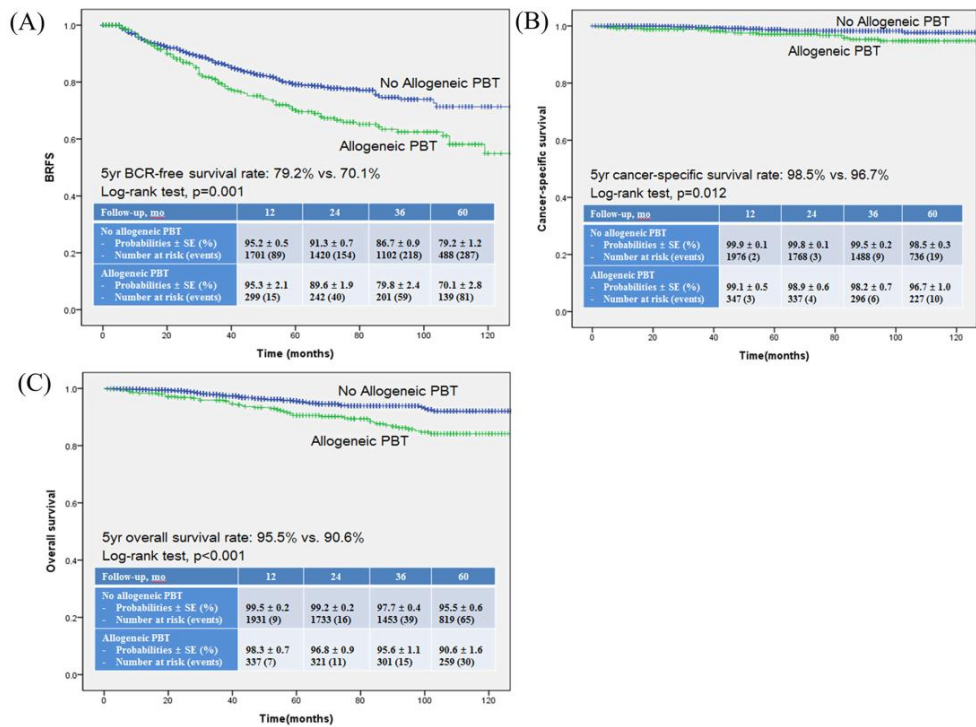


Figure 1. Kaplan-Meier survival curves for (A) BCR-free survival (BRFS), (B) Cancer-specific survival (CSS) and (C) Overall survival (OS) according to the administration of allogeneic perioperative blood transfusion (PBT)

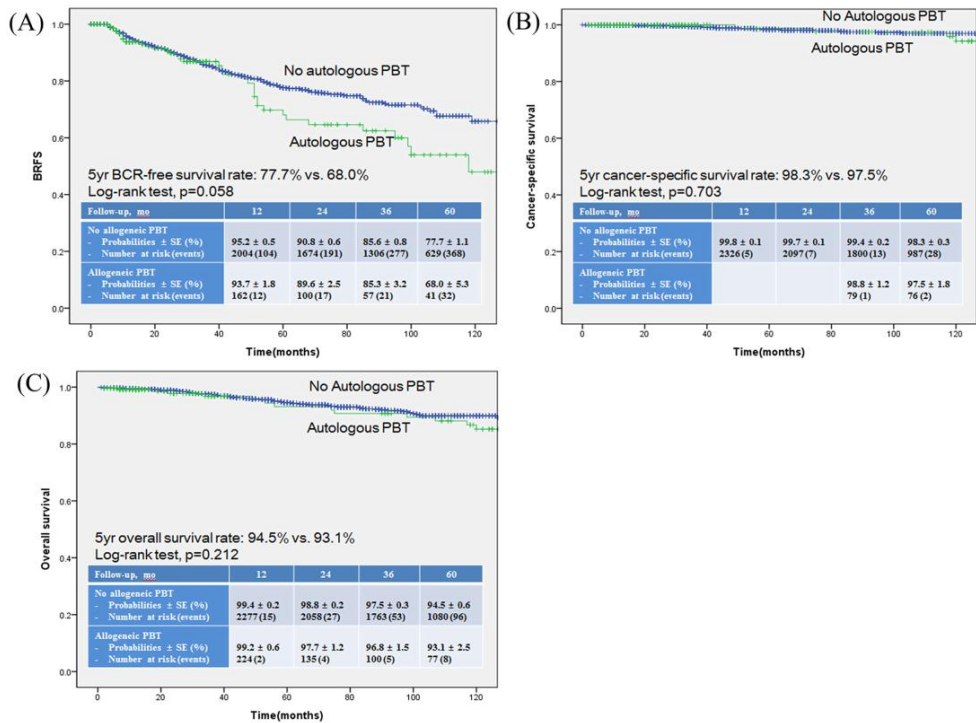


Figure 2. Kaplan-Meier survival curves for (A) BCR-free survival (BRFS), (B) Cancer-specific survival (CSS) and (C) Overall survival (OS) according to the administration of allogeneic perioperative blood transfusion (PBT)

Subgroup analysis

From the total patient cohort, 1,663 (62.4%) underwent ORP and 945 (35.4%) underwent RARP (LRP; 59 [2.2%]). In the RARP group, only 47 (4.9%) received PBT. In addition, a significant difference was observed in EBL between the ORP group (834.9ml) and the RARP group (428.2ml) ($p < 0.001$). Subgroup analysis was performed to adjust for the confounding effects of EBL in patients who underwent ORP with $EBL \geq 1000\text{ml}$. In the ORP group, 723 (43.5%) patients reported $EBL \geq 1000\text{ml}$, and among these patients, 160 (22.1%) received PBT (116 [72.5%] patients received allogeneic with/without autologous PBT, and 44 [27.5%]

patients received only autologous PBT). The multivariate logistic regression analysis based on EBL ($\geq 1000\text{ml}$ vs. $< 1000\text{ml}$) revealed no significant differences between EBL and other pathologic variables (Table S2). The multivariate Cox regression analysis and Kaplan-Meier survival analysis of this subgroup showed results concordant with the total cohort. Consequently, allogeneic PBT was still significantly associated with BRFS, CSS, and OS; however, autologous PBT was not (data not shown).

Table S2. Multivariate logistic regression analyses for evaluating variables associated with EBL ($\geq 1000\text{ml}$ vs. $< 1000\text{ml}$) in ORP group

	OR	p-value	95%PI
PSA <4	Reference		
4-10	1.583	0.107	0.906-2.767
10-20	1.514	0.181	0.824-2.780
≥ 20	1.473	0.260	0.751-2.887
Pathologic T ≥ 3	0.633	0.286	0.274-1.464
Pathologic GS ≥ 8	1.395	0.158	0.879-2.214
Pathologic LN (+)	1.956	0.054	0.915-3.772
ECE (+)	1.480	0.339	0.663-3.308
SVI (+)	0.739	0.360	0.437-1.251
HGPIN (+)	0.735	0.590	0.535-1.010
PSM (+)	1.384	0.052	0.923-1.892

ECE: extracapsular extension, HGPIN: high-grade prostatic intraepithelial neoplasia, PSM: positive surgical margin, SVI: seminal vesical invasion.

Discussion

Over the past 10 years, the rapid adoption of RARP as the surgical modality of clinically localized prostate cancer has led to lowering of intraoperative EBL and subsequent lower rates of PBT [18, 24, 25]. With this change, the overall PBT rate is decreasing in patients underwent RP. However, ORP is still conducted in a significant portion of RP, and the mean PBT rate has been reported as high as 16.5% (LRP; 4.7%, RARP; 1.8%) [26]. To date, the relationship between PBT and oncologic outcomes has shown conflicting results. Several retrospective studies suggest an association between PBT and mortality in general surgery patients including gastric cancer, hepatocellular carcinoma, and colon cancer [4, 27-29].

In field of bladder cancer, PBT has also been associated with adverse survival outcomes [13, 14, 30]. Abel et al [30]. reported that intraoperative BT, but not postoperative BT, was associated with increased risk of bladder cancer recurrence and mortality. They proposed several mechanisms to explain the association of intraoperative BT with adverse survival outcomes: immunosuppression caused by anesthetics and opioids, release of circulating tumor cells during surgery. However, the association of timing of BT with survival outcomes remains to be researched in prostate cancer. In addition, several studies investigated the impact of blood type on survival outcomes of bladder cancer [31, 32]. They hypothesized that the ABO blood group antigens and the Rhesus factor may influence on survival by various

moleculobiologic mechanisms: the ABO antigen expression on the urothelium, the location of ABO blood group on the long arm of chromosome 9 – a commonly altered region in bladder cancer, the encode of ABO gene on specific glycosyl transferases, followed by abnormal glycosylation of cell surface proteins, and then, modulation of epithelial-mesenchymal transition for cancer development and progression. However, these recent studies concluded that the ABO blood group and the Rhesus factor were not associated with survival outcomes in bladder cancer. Tollefson et al. [33] reported that blood type was a significant risk factor for venous thromboembolism after radical prostatectomy with pelvic lymphadenectomy. However, studies investigating the association with survival outcomes in prostate cancer are still lacking.

Allogeneic PBT has been found to be the major cause of TRIM due to transfusion components that mediate immunosuppression, such as allogeneic mononuclear cells, immunosuppressive prostaglandins, soluble biologic response modifiers, and soluble human leukocyte antigen (HLA) Class I peptides [19]. Previous studies of prostate cancer, however, have shown equivalent BRFS for the autologous, allogeneic, and no-PBT groups [7, 8, 16, 22]. In the present study, we found that allogeneic PBT was significantly associated with decreased BRFS, CSS, and OS, while autologous PBT did not show the significant association. These associations persisted after adjusting for potential confounding factors in multivariate analyses, and are also observed in the Kaplan-Meier survival analyses. Consequently, this provides further support for the hypothesis of a TRIM response to allogeneic PBT.

Oefelein et al. [6] reported that the operative EBL, but not the type of transfusion (autologous or allogeneic), was associated with decreased BRFS after RP. They assumed that factors leading to PBT are more significant for outcomes than the immunologic effects of PBT itself. Prior reports showed that PBT is clearly associated with significant EBL during surgery [5, 23] and the current study also showed significant association between PBT and EBL (Table 1). The receipt of PBT might simply be a surrogate marker for more extensive or aggressive disease requiring more aggressive surgical resection, and which is itself an independent predictor of worse oncological outcomes. In order to adjust for EBL as a potential confounding factor, we conducted subgroup analysis in patients who underwent ORP with $EBL \geq 1000\text{ml}$. Consequently, they showed the same results as those in the total cohort analyses. With this subgroup analyses, we control the confounding factors according to surgical modality and EBL.

Korets et al. [24] found that the date of surgery was a significant predictor for the receipt of PBT within the RARP group. They described that patients who underwent surgery in 2009 or earlier showed a significantly higher risk of receiving PBT compared to the patients underwent surgery in the later years. In current study, we also found that the year of performing the surgery (≥ 2009 vs. < 2009) was a significant predictor of requiring PBT within the RARP group alone, but not within the ORP group (data not shown). We were also able to control this confounding factor with the previously described subgroup analyses conducted in only the ORP group.

The most recent large cohort study conducted in Johns Hopkins Medical Institutions, Chalfin et al. [22] showed that allogeneic but not autologous PBT demonstrated a univariate association with decreased OS. However, the association was no longer significant in the multivariate analyses. This study was comparable to ours; however, the results did not show the concordance seen in other previous studies [7, 8, 15-19]. This discordance might be derived from racial difference in the study population. In contrast with the previous studies, to our knowledge, the current study is the first large cohort study of an Asian (Korean) population. Chhatre et al. [34] showed racial/ethnic differences in elderly patients in Medicare with advanced stage prostate cancer by using SEER-Medicare data. They showed the lower all-cause mortality and prostate cancer-specific mortality in the group of Asian men.

The current study has several limitations. First, our data showed significant clinicopathologic differences between the PBT group and no-PBT group due to the retrospective nonrandomized design (Table 1). As such, possible confounders may not have been completely accounted for even in multivariate analyses. Nevertheless, we did control for these variables in our subgroup analyses models and found that the association of PBT with adverse outcomes was maintained. Second, the administration of PBT was based on the volition of the physicians without institutional standardized criteria. Subsequently, unnecessary PBT might have been received and adversely affected clinical outcomes of patients. With this reason, the rate of PBT in current study was relatively higher than other studies.

Third, clinical data describing the use of other blood products such as fresh frozen plasma or platelets was not available. Also, the stratifications according to the timing of BT and the blood type were not accessible. Therefore, we could not evaluate the impact of these variables, which may also be possible confounders and affect clinical outcomes. Fourth, the rate of PLND was relatively lower than other studies. It might be derived from a large portion of RARP (35.4%) in our study population. Prasad et al. [35] reported that the rate of PLND was significantly lower in RARP group than ORP group (17% vs. 83% for LRP/RARP, respectively, $p<0.001$). In addition, the decision to perform PLND was at the discretion of the surgeon, and then, some had omitted the PLND during RP according to their own clinical judgment. Lastly, follow-up periods were not long enough at 79.4 months in the PBT group and 56.5 months in the no-PBT group (Table 1). The long-term follow-up is essential due to the long-drawn-out clinical course of prostate cancer. Thus, further studies might be necessary to validate our findings.

Conclusions

In contrast with some previous studies, we found that allogeneic PBT during RP were significantly associated with decreased BRFS, CSS, and OS in both univariate and multivariate analyses. This provides further support for a TRIM hypothesis for allogeneic PBT. While our data are limited to an Asian (Korean) population, the efforts to reduce the use of allogeneic PBT in these patients are warranted. These efforts also include the utilization of intraoperative cell salvage or prepared autologous blood for patients who are expected to receive PBT in preoperative evaluation.

References

1. Buddeberg F, Schimmer BB, Spahn DR. Transfusion-transmissible infections and transfusion-related immunomodulation. *Best Pract Res Clin Anaesthesiol* 2008 Sep;22(3):503-17.
2. Amato A, Pescatori M. Perioperative blood transfusions and recurrence of colorectal cancer. *Cochrane Database Syst Rev* 2006 Jan 25(1):CD005033.
3. Motoyama S, Okuyama M, Kitamura M, Saito R, Kamata S, Murata K, et al. Use of autologous instead of allogeneic blood transfusion during esophagectomy prolongs disease-free survival among patients with recurrent esophageal cancer. *J Surg oncol* 2004 Jul;87(1):26-31.
4. Wang CC, Iyer SG, Low JK, Lin C, Wang S, Lu SN, et al. Perioperative factors affecting long-term outcomes of 473 consecutive patients undergoing hepatectomy for hepatocellular carcinoma. *Ann Surg Oncol* 2009 Jul;16(7):1832-42.
5. Lloyd JC, Bañez LL, Aronson WJ, Terris MK, Presti JJ, Amling CL, et al. Estimated blood loss as a predictor of PSA recurrence after radical prostatectomy: results from the SEARCH database. *BJU Int* 2010 Feb;105(3):347-51.
6. Oefelein MG, Colangelo LA, Rademaker AW, McVary KT. Intraoperative blood loss and prognosis in prostate cancer patients undergoing radical retropubic prostatectomy. *J Urol* 1995 Aug;154(2 Pt 1):442-7.

7. Paul R, Schmid R, Busch R, van Randenborgh H, Alschibaja M, Scholer S, et al. Influence of blood transfusions during radical retropubic prostatectomy on disease outcome. *Urology* 2006 Jan;67(1):137-41.
8. Ford BS, Sharma S, Rezaishiraz H, Huben RS, Mohler JL. Effect of perioperative blood transfusion on prostate cancer recurrence. *Urol Oncol* 2008 Jul-Aug;26(4):364-7
9. Heal JM, Chuang C, Blumberg N. Perioperative blood transfusions and prostate cancer recurrence and survival. *Am J Surg* 1988 Nov;156(5):374-80.
10. Jakobsen E, Eickhoff J, Andersen J, Ottesen M. Perioperative blood transfusion does not affect survival after operation for renal cell cancer. *Eur Urol* 1994;26(2):145-8.
11. Linder BJ, Thompson RH, Leibovich BC, Cheville JC, Lohse CM, Gastineau DA, et al. The impact of perioperative blood transfusion on survival after nephrectomy for non-metastatic renal cell carcinoma (RCC). *BJU Int* 2014 Sep;114(3):368-74.
12. Jahnson S, Bergström R, Pedersen J. Extent of blood transfusion and cancer-related mortality after cystectomy and urinary diversion for bladder cancer. *Br J Urol* 1994 Dec;74(6):779-84.
13. Morgan TM, Barocas DA, Chang SS, Phillips SE, Salem S, Clark PE, et al. The relationship between perioperative blood transfusion and overall mortality in patients undergoing radical cystectomy for bladder cancer. *Urol Oncol* 2013 Aug;31(6):871-7.

14. Linder BJ, Frank I, Cheville JC, Tollefson MK, Thompson RH, Tarrell RF, et al. The impact of perioperative blood transfusion on cancer recurrence and survival following radical cystectomy. *Eur Urol* 2013 May;63(5):839-45.
15. Gallina A, Briganti A, Chun FKH, Walz J, Hutterer GC, Erbersdobler A, et al. Effect of autologous blood transfusion on the rate of biochemical recurrence after radical prostatectomy. *BJU Int* 2007 Dec;100(6):1249-53.
16. Ness P, Walsh P, Zahurak M, Baldwin M, Piantadosi S. Prostate cancer recurrence in radical surgery patients receiving autologous or homologous blood. *Transfusion* 1992 Jan;32(1):31-6.
17. Velagapudi SR, Frydenberg M, Oesterling JE, Bergstralh EJ, Moore SB, Ruckle HC, et al. Homologous blood transfusion in patients with prostate cancer: no effect on tumor progression or survival. *Urology* 1994 Jun;43(6):821-7.
18. Boehm K, Beyer B, Tennstedt P, Schiffmann J, Budaues L, Haese A, et al. No impact of blood transfusion on oncological outcome after radical prostatectomy in patients with prostate cancer. *World J Urol* 2015 Jun;33(6):801-6.
19. Yeoh TY, Scavonetto F, Weingarten TN, Karnes RJ, van Buskirk CM, Hanson AC, et al. Perioperative allogeneic nonleukoreduced blood transfusion and prostate cancer outcomes after radical prostatectomy. *Transfusion* 2014 Sep;54(9):2175-81.
20. Davies A, Ramarakha P, Cranston D, Clarke PJ. Effect of blood transfusion on survival after radiotherapy as treatment for carcinoma of the prostate. *Ann R Coll Surg Engl* 1991 Mar;73(2):116-8.

21. McClinton S, Moffat L, Scott S, Urbaniak S, Kerridge D. Blood transfusion and survival following surgery for prostatic carcinoma. *Br J Surg* 1990 Feb;77(2):140-2.
22. Chalfin HJ, Frank SM, Feng Z, Trock BJ, Drake CG, Partin AW, et al. Allogeneic versus autologous blood transfusion and survival after radical prostatectomy. *Transfusion* 2014 Sep;54(9):2168-74.
23. Soubra A, Zabell JR, Adejoro O, Konety BR. Effect of Perioperative Blood Transfusion on Mortality for Major Urologic Malignancies. *Clin Genitourin Cancer* 2015 Jun;13(3):e173-81.
24. Korets R, Weinberg AC, Alberts BD, Woldu SL, Mann MJ, Badani KK. Utilization and Timing of Blood Transfusions Following Open and Robot-Assisted Radical Prostatectomy. *J Endourol* 2014 Dec;28(12):1418-23.
25. Novara G, Ficarra V, Rosen RC, Artibani W, Costello A, Eastham JA, et al. Systematic review and meta-analysis of perioperative outcomes and complications after robot-assisted radical prostatectomy. *Eur Urol* 2012 Sep;62(3):431-52.
26. Tewari A, Sooriakumaran P, Bloch DA, Seshadri-Kreaden U, Hebert AE, Wiklund P. Positive surgical margin and perioperative complication rates of primary surgical treatments for prostate cancer: a systematic review and meta-analysis comparing retropubic, laparoscopic, and robotic prostatectomy. *Eur Urol* 2012 Jul;62(1):1-15.
27. Ojima T, Iwahashi M, Nakamori M, Nakamura M, Naka T, Katsuda M, et al. Association of allogeneic blood transfusions and long-term survival of patients

with gastric cancer after curative gastrectomy. *J Gastrointest Surg* 2009 Oct;13(10):1821-30.

28. Shiba H, Ishida Y, Wakiyama S, Iida T, Matsumoto M, Sakamoto T, et al. Negative impact of blood transfusion on recurrence and prognosis of hepatocellular carcinoma after hepatic resection. *J Gastrointest Surg* 2009 Sep;13(9):1636-42.

29. Liewald F, Wirsching R, Zülke C, Demmel N, Mempel W. Influence of blood transfusions on tumor recurrence and survival rate in colorectal carcinoma. *Eur J Cancer* 1990 Mar;26(3):327-35.

30. Abel EJ, Linder BJ, Bauman TM, Bauer RM, Thompson RH, Thapa P, et al. Perioperative blood transfusion and radical cystectomy: does timing of transfusion affect bladder cancer mortality? *Eur Urol* 2014 Dec;66(6):1139-47.

31. Enqel O, Soave A, Peine S, Kluth LA, Schmid M, Shariat SF, et al. The impact of the ABO and the Rhesus blood group system on outcomes in bladder cancer patients treated with radical cystectomy. *World J Urol* 2015 Nov;33(11):1769-76.

32. Moschini M, Bianchi M, Rossi MS, Dell'Oglio P, Gandaqlia G, Fossati N, et al. Timing of blood transfusion and not ABO blood type is associated with survival in patients treated with radical cystectomy for nonmetastatic bladder cancer: Results from a single high-volume institution. *Urol Oncol* 2016 Feb 2. pii:S1078-1439(15)00612-2. doi:10.1016/j.urolonc.2015.12.016. [Epub ahead of print].

33. Tollefson MK, Karnes RJ, Ranqel L, Carlson R, Boorjian SA. Blood type, lymphadenectomy and blood transfusion predict venous thromboembolic events

following radical prostatectomy with pelvic lymphadenectomy. J Urol 2014 Mar;191(3):646-51.

34. Chhatre S, Bruce Malkowicz S, Sanford Schwartz J, Jayadevappa R. Understanding the Racial and Ethnic Differences in Cost and Mortality Among Advanced Stage Prostate Cancer Patients (STROBE). Medicine (Baltimore) 2015 Aug;94(32):e1353.

35. Prasad SM, Keating NL, Wang Q, Pashos CL, Lipsitz S, Richie JP, et al. Variations in surgeon volume and use of pelvic lymph node dissection with open and minimally invasive radical prostatectomy. Urology 2008 Sep;72(3):647-52.

국문 초록

서론: 전립선암 환자에서 술 중 수혈 여부가 전체 생존율 및 암특이 생존율에 미치는 영향에 대한 몇몇 연구가 있었으나, 이에 대한 명확한 결론은 아직 내려지지 않았다. 본 연구에서는 전립선암으로 근치적 전립선 전적출술을 시행 받은 환자에서의 술 중 수혈의 예후적 가치를 분석하였다.

대상 및 방법: 1993년부터 2014년까지 본 기관에서 전립선암으로 근치적 전립선 전적출술을 시행 받은 환자 2713명을 후향적으로 분석하였다.

결과: 평균 연령은 66.2 ± 6.9 세였으며, 추적기간의 중앙값은 60.2 (0-261)개월이었다. 440명 (16.5%)의 환자가 술 중 수혈을 받았으며, 이 중 350명 (79.5%)의 환자는 동종 수혈 (Allogeneic transfusion), 90명 (20.5%)의 환자는 자가 수혈 (Autologous transfusion)을 각각 시행 받았다. 수혈 여부에 따라 임상병리학적 인자들을 분석하였을 때, 술 전 Hb, 수술 방법, 골반림프절절제술 여부, 신경혈관다발 보존 여부, 수술 시간, 출혈량, 병리학적 Gleason 점수, 절제된 임파절의 숫자, 술 후 방사선 치료 여부, 추적관찰 기간, 생화학적 재발, 중앙 특이 생존, 전체 생존 여부가 유의한 상관관계가 있는 것으로 나타났다. 다변량 Cox 비례위험회귀분석을 시행하였을 때, 동종 수혈 여부는 생화학적 재발률, 중앙 특이 생존율 및 전체 생존율의 유의한 독립적인 예측인자였다. 하지만, 자가 수혈 여부는 단변량 및 다변량 분석 모두에서 유의하지 않은 것으로 보고되었다. Kaplan-Meier 분석을 시행하였을 때, 5년 평균 전체 생존율은 동종 수혈 여부에 따라 시행 받은 군과 받지 않은 군에서 각각 90.6% 와 95.5% 로 나타났으며 ($p < 0.001$), 5년 평균 중앙 특이 생존율은 각각 96.7% 와 98.5% 로 나타났다 ($p = 0.012$).

결론: 본 연구에서 근치적 전립선 전적출술을 시행 받은 전립선암 환자에서 술 중 동종 수혈 여부는 생화학적 재발률, 중앙 특이 생존율

및 전체 생존율의 독립적인 예측인자였다. 이는 동종 수혈의 면역조정 (immunomodulation) 가설을 뒷받침하는 결과라고 할 수 있겠다.

주요어: 근치적 전립선 전적출술, 수혈, 예후, 전립선암

학 번: 2011-23742