



저작자표시 2.0 대한민국

이용자는 아래의 조건을 따르는 경우에 한하여 자유롭게

- 이 저작물을 복제, 배포, 전송, 전시, 공연 및 방송할 수 있습니다.
- 이차적 저작물을 작성할 수 있습니다.
- 이 저작물을 영리 목적으로 이용할 수 있습니다.

다음과 같은 조건을 따라야 합니다:



저작자표시. 귀하는 원저작자를 표시하여야 합니다.

- 귀하는, 이 저작물의 재이용이나 배포의 경우, 이 저작물에 적용된 이용허락조건을 명확하게 나타내어야 합니다.
- 저작권자로부터 별도의 허가를 받으면 이러한 조건들은 적용되지 않습니다.

저작권법에 따른 이용자의 권리는 위의 내용에 의하여 영향을 받지 않습니다.

이것은 [이용허락규약\(Legal Code\)](#)을 이해하기 쉽게 요약한 것입니다.

[Disclaimer](#) 

치의학 석사학위 논문

The Effect of including
clinical performance on the
survival estimates of direct
restorations

2013년 2월

서울대학교 치의학대학원

치 의 학 과

김 규 리

The Effect of including clinical
performance on the survival
estimates of direct restorations

지도교수 조 병 훈

이 논문을 치의학석사학위논문으로 제출함

2012년 11월

서울대학교 치의학대학원

치 의 학 과

김 규 리

김규리의 석사학위논문을 인준함

2013년 2월

위 원 장 _____ (인)

부 위 원 장 _____ (인)

위 원 _____ (인)

Abstract

The Effect of including
clinical performance on the
survival estimates of direct
restorations

Department of Dentistry, School of Dentistry,
Seoul National University

(Directed by Professor Byeong-Hoon Cho,
DDS, PhD)

Kim Kyou Li

1. objectives

In most retrospective studies, the clinical performance of restorations had not been considered in survival analysis. This study investigated the effect of including the clinically

unacceptable cases according to modified USPHS criteria into the failed data on the survival analysis of direct restorations as to the longevity and prognostic variables.

2. methods

Nine hundred and sixty-seven direct restorations were evaluated. The data of 204 retreated restorations were collected from the records, clinical performance of 763 restorations in function were evaluated according to modified USPHS criteria by two observers. The longevity and prognostic variables of the restorations were compared with or without including clinically unacceptable cases into the failures using Kaplan–Meier survival analysis and Cox proportional hazard model.

3. results

The median survival times of amalgam, composite resin and glass ionomer were 11.8 years, 11.0 years and 6.8 years, respectively. Glass ionomer showed significantly low longevity compared to composite resin and amalgam. When clinically unacceptable restorations were included into the failure, the median survival times of them decreased to 8.9 years, 9.7 years and 6.4 years, respectively. After considering the clinical performance, composite resin was the only material that showed a difference.

Although the longevity and prognostic variables looked similar in both the survival analyses with and without considering the clinical performance, the longevity of composite resin showed

statistical differences and the relative risks in operator groups showed opposite result. In the design of retrospective study, clinical evaluation need to be included.

Key Words ; clinical trial, retrospective study, longevity, direct restoration, USPHS criteria, amalgam, composite, glass ionomer

목 차

- I. 서론(Introduction)
- II. 실험방법(Materials and Methods)
- III. 결과(Results)
- IV. 토의(Discussion)
- V. 결론(Conclusion)
- VI. 참고문헌(Reference)
- VII. Captions to Table and Figures

I. 서론 (Introduction)

Dentists use a wide range of materials in daily practices to restore tooth structure. Dentists and patients choose a restorative material that has a priority under considerations of various factors. The longevity of restorations is usually the most prior factor among them. It was estimated that the replacement of failed restorations constituted about 60 percent of all operative works of dentists.¹ Survival rate has been used as a measure of clinical performance.² Therefore, how long the restoration could serve in oral cavity has been a concern in evidence-based dentistry. Life expectancy of dental restorative materials have been reported in many clinical researches, but there have been discrepancies in the estimated values among the reports due to the differences in the study design, criteria for case selection, determination of success and failure, and estimation of survival time, etc.

Clinical studies have estimated the longevity based on prospective or retrospective approaches. Prospective studies have less distortion because they collect data in a controlled study design and observe the assigned factors consistently in a longitudinal manner. However, they require many years in order to achieve enough clinical validation, and there is a possibility of operator- or patient-related bias. On the other hand, retrospective studies have advantages in that they need relatively short time

and low cost although the risk of inaccuracy from bias or omission is higher than prospective ones.^{3,4,5} With survival analysis, the risk of inexactitude can be compensated by using censored cases that the time of failure cannot be determined and estimating survival rates at a given time.⁶

For discriminating the status of restoration, various clinical evaluation methods were used.⁷ Among them, United States Public Health Service(USPHS) criteria was used the most widely with various modified forms to determine the clinical performance of dental restorations. Many studies used the criteria for the evaluation of the clinical performance, but actually for the calculation of longevity they used only the ratio of the failed restoration. Only a few articles used the grade of 'clinically unacceptable' of the criteria as a failure even though the restoration remained.^{8,9,10} Thus, the effect of the inclusion of the cases rated as 'clinically unacceptable' according to the USPHS criteria into the failure on the longevity needs to be evaluated.

This study investigated the effect of including the clinically unacceptable cases according to modified USPHS criteria into the failed data on the survival analysis of direct restorations. For the purpose, the longevity and prognostic variables of direct restorations obtained in a retrospective cross-sectional study were compared by analyzing the data with or without including clinically unacceptable cases into the failures using Kaplan-Meier

survival analysis and Cox proportional hazard model.

II. 실험방법(Materials and Methods)

From July 6, 2009 to August 28, 2009, among the patients who visited Department of Conservative Dentistry, Seoul National University Dental Hospital, 232 patients who had direct restorations delivered in this clinic were evaluated. The study was performed under the approval of the Institutional Review Board of Seoul National University Dental Hospital. Before the patient visited the clinic, data were collected from the patient's dental record. The information about the patient included the age, sex, and medical and dental history. The information about treatment, such as, tooth type, date of treatment, restorative material, reason for treatment was also included. If there was a record of subsequent retreatment or further treatment, such as extraction, endodontic treatment, and prosthodontic treatment, etc, it was considered as an event. Its life-span was calculated from the date of the first treatment to the subsequent treatment according to the record. However, if there was no record on the subsequent treatment and thus the restoration was expected to work in the oral cavity, the clinical performance of the

restoration was evaluated by two trained observers under the informed consent when the patient visited for his/her appointed treatments. At first, whether the characteristic of the restoration was the same with the record was evaluated. For the restoration that was confirmed to remain, it was regarded as a censored case and evaluated according to the modified USPHS criteria (Table 1). If two observers had disagreement about the grades, a consensus was made between them and recorded. When the restoration did not match the record or was absent, the case was excluded from the data.

The statistical analyses were performed on the data in three phases. First, Kaplan–Meier survival analysis was performed to evaluate the longevity of the restorations without including the cases rated as clinically unacceptable according to the USPHS criteria into the event cases. The direct restorative materials were classified as three groups, such as amalgam (AM), composite resin (CR), and glass ionomer (GI). Conventional glass ionomer and resin-modified glass ionomer were included in the group GI, on the basis of the bonding characteristics that both of them adhered to the tooth structure by an ionic bond. Reasons of restoration were divided into four categories: primary reasons include primary caries, tooth fracture, crack, attrition, abrasion,

and erosion; secondary reasons include replacement of old restorations, loss of retention, restoration fracture; pulpal problems include pulp exposure, hypersensitivity and pulpal pain; esthetics include anterior diastema and discoloration of restorations. Secondly, in order to evaluate the effect of the inclusion of clinically unacceptable cases in any criterion of the USPHS criteria into event cases on the calculated longevity of the restoration, the survival analysis was repeated again with including the clinically unacceptable cases into the event cases and both survival estimates were compared. For the restoration that was ethically recommended being replaced due to the clinically unacceptable Charlie grade during the evaluation, its life-span was calculated from the date of the treatment to the evaluation. Finally, multivariate Cox proportional hazard model to analyze the effect of potential prognostic variables on the survival of restorations was also performed for both the data with or without including the clinically unacceptable cases into the failure. The assumed variables were the restorative material, cavity classification, type of the restored tooth, operator group, patient age, gender, and presence of medical history. All the statistical analyses were performed at a level of $p < 0.05$.

III. 결과(Results)

Among the 1487 restorations from 288 patients evaluated in the survey, 967 direct restorations from 232 patients were included in this report. CR (n=676, 69.9%) was the most frequently used material, followed by AM (n=147, 15.2%), and GI (n=144, 14.9%). In cavity classification, Class V restorations had the largest portion of the cases (n=499, 51.6%), followed by Class II (n=198, 20.5%) and Class I (n=149, 15.4%) restorations. The number of the restorations that had subsequent re-treatment or further treatment records were 204.

The median survival times and the survival rates at 5 years and 10 years of the restorations were presented in Tables 2 and 3. When the clinical performance of the restorations according to the modified USPHS criteria was not included in determining the failure rate, the median survival times of AM, CR, GI and total cases were 11.8 years, 11.0 years, 6.8 years and 11.0 years, respectively (Table 2). GI showed significantly low survival estimate compared to CR and AM (Breslow test, Figure 1a). However, when the restoration rated as clinically unacceptable Charlie in any one of the modified USPHS criteria was included into the failure, the median survival times of them decreased to 8.9 years, 9.7 years, 6.4 years, and 9.3 years, respectively (Table 3). Only the survival estimates of CR and GI showed a

significant difference (Breslow test, Figure 1b). Both five and ten year survival rates were the highest in Class V restorations (76.2% and 55.4%, respectively), followed by Class I (53.6% and 43.2%) and Class II (61.9% and 23.0%) (Table 3). According to the cavity classifications, the statistical difference in the survival estimates between groups showed a little change (Figures 2a and 2b). When the clinical performance of the restorations according to the USPHS criteria was considered, the difference in the survival estimates between Class I and Class II and Class II and Class V were statistically significant (Breslow test, Figure 2b).

The tooth group, age group, cavity classifications, reasons of treatment, restorative materials, sex and operator group were the prognostic variables that significantly affected the survival of the restorations in a descending order (Cox proportional hazard model, $p < 0.05$, Table 4). The relative risk of direct restorations were significantly lower in molar teeth than in anterior teeth. The restorations in the group of teenagers, in Class II cavities, treated due to anterior esthetic reasons such as anterior diastema and discoloration of restorations, with CR and GI, and of males showed significantly higher relative risks than those in the age groups of thirties and forties, in Class I cavities, owing to primary reasons such as caries, tooth fracture, crack, attrition,

abrasion and erosion, with AM, and of females, respectively (Table4). Whereas, there were no significant differences in the relative risk between presence and absence of systemic diseases. For these variables, there were no opposite results between before and after considering the clinical performance of each restorations according to the USPHS criteria. For the operator groups, the results were opposite between the two failure criteria.

When the modified USPHS criteria were considered, 505 restorations (57.4%) were rated Alpha or Bravo. Seventy-three cases (7.5%) were rated Charlie and they were changed from censored cases to event cases as failures. The criterion that showed the greatest change in the numbers of event cases was secondary caries (n=55, 75.3%), follow by marginal adaptation (n=20, 27.4%), marginal discoloration (n=11, 15.1%), hypersensitivity (n=8, 11.0%). AM restorations changed the most from censored to event (AM, 22/147 cases, 15.0%; CR, 46/676 cased, 6.8%; GI, 5/144 cases, 3.5%). Out of 22 AM restorations, 18 were rated Charlie in secondary caries, 8 in marginal adaptation, and 3 in marginal discoloration. In 46 CR restorations, secondary caries (33 cases) was the most common reason of the Charlie grade and marginal adaptation (10 cases), marginal discoloration and hypersensitivity (7 cases) followed. From 5 GI

restorations, 4 restorations showed secondary caries, two showed clinically unacceptable marginal adaptation, and one showed marginal discoloration. When the survival estimates obtained before and after the restorations rated as clinically unacceptable Charlie were included into the event cases were compared, the increase of the event cases made the two survival estimates statistically different in CR (Log rank test, $p = 0.032$, Figure 3b), and marginally different in AM (Log rank test, $p = 0.056$, Figure 3a). However, the survival estimates of GI were statistically not different (Figure 3c).

IV. 토의 (Discussion)

This study was aimed to investigate the effect of including the clinically unacceptable cases into the failures on their longevity in the survival analysis. In the retrospective study, the survival time was calculated from the failure event. Even though a restoration needed retreatment due to secondary caries, lack of marginal adaptation, partial loss, and so on, but it retained in the oral cavity, it has not been regarded as an event in most retrospective studies.^{11,12} In prospective studies, the clinical performances of these cases were generally reported using the USPHS criteria. Roulet reported the 6 year survival rate of AM

restorations(87%) according to the USPHS criteria.¹³ However, most prospective clinical studies had difficulties to continue the investigation for a long time and were obliged to deal with relatively short clinical performances of the restorations for only a few years.^{8,9} In the view point of evaluation of the long-term clinical performance of the dental restorations, retrospective studies can be more suitable than prospective ones.¹⁴ In order to reflect the clinical performance of the restorations to the survival estimates of the retrospective observation, intra-oral evaluation of the restorations with an appropriate criteria should be considered.

In the present study, the restorations that were graded as Charlie according to the USPHS criteria were regarded as failure in the ethical point of view that a dentist should recommend replacement of these restorations. The influence of applying this strict criteria on the survival analysis was investigated by comparing the survival estimates obtained before and after including the clinically unacceptable Charlie cases into event cases. When the clinically unacceptable cases were included in the failures, the median survival times and survival rates of the restorations decreased from those without including the cases into the failures (Tables 2 and 3). When the clinical performance of the restorations according to the modified USPHS criteria was not considered in determining the failure rate, GI showed significantly low survival estimate compared to CR and AM

(Figure 1a). However, after considering the clinical performance, the survival estimate of GI was significantly different only from CR (Figure 1b). Therefore, considering the clinical performance apparently affected the comparison of the survival estimates of restorative materials. From the Cox proportional hazard model, the p values showed a trend to increase slightly. Although no apparent changes of the relative risks and significance of the correlation were observed in each variable, those for the operator groups showed opposite results (Table 4). The two survival estimates of CR restorations showed a significant difference before and after including the Charlie rated cases into the event (Figure 3b). Those of AM restorations showed a marginal difference and glass ionomer showed no difference. Therefore, in the design of the future retrospective study, intra-oral evaluation of the clinical performance of each restoration would be recommended being included in the determination of the failure.

This retrospective study also evaluated the clinical performance of the direct restorations, to compare the longevity between materials and cavity classifications and to assess the prognostic factors. In spite of the retrospective study, the assessment in this study was more reliable than the data obtained in surveys that were used in most retrospective studies, because this study used

the treatment records of a university dental hospital and the operative procedures controlled well in a department. However, the clinical practice was performed by the clinicians of university dental hospital who had highly interest in the treatment, so that the difference from the result of the whole population should be considered. In this study, the use of AM restorations decreased continuously (unpublished data), and CR exceeded AM in the proportion of posterior direct restorations since 2000. The proportion of direct AM restorations in this study (15.2%) was higher than that in Finland (4.8%).¹⁵

There was no difference in the survival estimates of AM and CR restorations. Opdam *et al.* showed higher survival rate of posterior CR than AM.⁴ On the other hand, previous comparisons of CR and AM restorations in posterior teeth are generally in favor of the AMs.^{16,17} This controversy was from the absence of comparison for each stratum of cavity classification. In the present study the longer survival time of CR might result from the fact that the material was used in Class V cavity at a higher proportion (Table2). Like most previous studies,¹²⁻¹⁴ the median survival time of CR(10.9years) in Class V restorations was not different from that of GI(10.3years) in the present study.¹⁸ Meanwhile, AM restoration had only 8 Class V restorations that

were less influenced from the occlusal force than occlusal restorations, but the material was used mostly in Class I and Class II cavities. The survival estimates of Class II restorations was less than that of Class V restorations because of direct effect of the occlusal force (Figure2b). The result showed that cervical restorations worked longer in the oral cavity than occlusal restorations. It suggests that occlusal forces affected directly to the clinical performance of the restorations.

In each stratum of cavity classification, the clinical performance of AM restorations were better than that of CR restorations in Class I restorations (Table 3). The median survival times of Class I and Class II AM restorations were 10.0 years and 7.9 years, respectively, whereas the median survival times of Class I and Class II CR restorations were statistically not different as 5.0 years and 7.8 years, respectively (Table 3). The findings of this study were similar with previous retrospective studies which suggested that AM had a lower failure rate than CR.^{19,20} The result that the survival time of Class II AM restorations was shorter than Class I AM restorations also coincided with several reports about posterior restorations.^{21,22} However, if the clinical performance was not considered, the difference between the classifications disappeared in CR restorations (Table2).

According to the study design, there have been considerable controversies about the effect of prognostic variables on the longevity of the restorations. In this study, the factors that affected the longevity of restorations were tooth group, age, cavity classification, and reasons of treatment, materials, gender and operator group in a descending order (Table 4). However, in most previous studies, it has been reported that the cavity type had a significant influence on the longevity of the restorations.^{4,5,12} Bernardo *et al.* showed that the clinical performance of the restorations were independent of the restored surface.²³ They also affirmed that the type of tooth and size of restoration had no influence on the longevity. Van Nieuwenhuysen *et al.* reported that age of the patients had an effect on the survival of the restorations.²⁴ Since there have been controversies on the association of the prognostic variables with the longevity of restorations, it should be of paramount importance in the future investigations to standardize study design. Although CR and GI restorations showed higher relative risks than AM restorations, appropriate repair of CR restorations through well-timed or at early check up will improve the longevity of the restorations. Therefore repair of CR restorations can't be overemphasized.²⁵ Indications of repair and the criteria whether repair and replacement are censored or in an event

should be established, and future studies on their longevity will be needed.

V. 결론(Conclusion)

Before and after considering the clinical performance according to modified USPHS criteria in the survival analysis, the longevity and prognostic variables looked similar. However, the longevity of CR restorations showed statistical differences and the relative risks in operator groups showed opposite result. Moreover, if the clinical performance was considered in the survival analysis, the survival estimates of CR restorations showed significant differences between cavity classifications. Therefore, clinical evaluation needs to be included in the design of retrospective study. The age of the patient, tooth type, reason of treatment, cavity classification, restorative material and gender of the patient were the prognostic variables that affected the survival estimates of direct restorations.

VI. 참고문헌(Reference)

1. Mjör IA. Amalgam and composite resin restorations: longevity and reasons for replacement. Paper presented at: International

Symposium on Criteria for Placement and Replacement of Dental Restorations; Oct. 19–21, 1989, Lake Buena Vista, Fla.

2. Önal B, Pamir T. The two-year clinical performance of esthetic restorative materials in noncarious cervical lesions. *JAmDentAssoc*2005;136(11):1547–1555.

3. Chadwick B, Treasure E, Dummer P, Dunstan F, Dunstan F, Gilmour A, Jones R, Phillips C, Stevens J, Rees J, Richmond S. Challenges with studies investigating longevity of dental restorations—a critique of a systematic review. *JDentRes*2001;29:155–161.

4. Manhart J, Chen HY, Hamm, Hickel R. Review of the clinical survival of direct and indirect restorations in posterior teeth of the permanent dentition. *OperDent*2004;29:481–508.

5. Opdam NJM, Bronkhorst EM, Rooters JM, Loomans BAC. A retrospective clinical study on longevity of posterior composite and amalgam restorations. *DentMater*2007;23:2–8.

6. Kubo S, Kawasaki A, Hayashi Y. Factors associated with the longevity of resin composite restorations. *DentMaterJ*2011;30(3):374–383.

7. Goldberg AJ, Rydinge E, Santucci EA, Racz WB. Clinical

evaluation methods for posterior composite restorations. *JDentRes*1984;63(12):1387-1391.

8. Arhun N, Celik C, Yamanel K. Clinical evaluation of resin-based composites in posterior restorations: two-year results. *OperDent*2010;35(4):397-404.

9. Daou MH, Tavernier B, Meyer JM. Clinical evaluation of four different dental restorative materials: one-year results. *SchweizMonatsschrZahnmed*2008;118(4):290-295.

10. Alves dos Santos MP, Luiz RR, Maia LC. Randomized trial of resin-based restorations in Class I and Class II beveled preparations in primary molars: 48-month results. *JDent*2010;38(6):451-459.

11. Scholtanus JD, Huysmans MC. Clinical failure of class-II restorations of a highly viscous glass-ionomer material over 6-year period: A retrospective study. *JDent*2007;35(2):156-162.

12. Mjör IA, Shen C, Eliasson ST, Richter S. Placement and replacement of restorations in general dental practice in Iceland. *OperDent*2002;27(2):117-123.

13. Roulet JF. Longevity of glass ceramic inlays and amalgam—results up to 6 years. *DentMater*2012;28(1):87-101.

14. Manhart J, Chen HY, Hamm G, Hickel R. Review of the clinical survival of direct and indirect restorations in posterior teeth of the permanent dentition. *OperDent*2004;29(5):481-508.
15. Forss H, Widström E. From amalgam to composite: selection of restorative materials and restoration longevity in Finland. *ActaOdontolScand*2001;59:57-62.
16. Goldstein GR. The longevity of direct and indirect posterior restorations is uncertain and may be affected by a number of dentist-, patient-, and material-related factors. *JEvidBaseDentPrac*2010;10:30-31.
17. Antony K, Genser D, Heibinger C, Windisch F. Longevity of dental amalgam in comparison to composite materials. GMS Health Technolgn Assessment, 2008.
18. MS Thesis (No YG)
19. Mjor IA. The reasons for replacement and the age of failed restorations in general dental practice. *ActaOdontScand*1997;55:58-63.
20. Mjor IA, Dahl JE, Moorhead JE. Age of restorations at replacement in permanent teeth in general dental practice. *ActaOdontScand*2000;38:97-101.

21. Rodolpho PA, Cenci MS, Donassollo TA, Loguercio AD, Demarco FF. A clinical evaluation of posterior composite restorations: 17-year findings. *JDent*2006;34:427-435.
22. Burke FJT, Cheung SW, Mjor IA, Wilson NHF. Restoration longevity and analysis of reasons for the placement and replacement of restorations provided by vocational dental practitioners and their trainers in the United Kingdom. *QuintessenceInt*1999;30:234-242.
23. Bernardo M, Luis H, Martin MD, Leroux BG, Rue T, Leitao J, DeRouen TA. Survival and reasons for failure of amalgam versus composite posterior restorations placed in a randomized clinical trial. *JDentAssoc*2007;138:775-783.
24. Van Nieuwenhuysen JP, D'Hoore W, Carvalho J, Qvist V. Long-term evaluation of extensive restorations in permanent teeth. *JDent*2003;31:395-405.
25. Demarco FF, Correa MB, Cenci MS, Moraes RR, Opdam NJ. Longevity of posterior composite restorations: not only a matter of materials. *DentMater*2012;28:87-101.

VI. Captions to Table and Figures

Figure 1. Comparison of survival estimates according to restorative materials using Kaplan–Meier survival analysis. a, When clinically unacceptable Charlie cases were not included into the failure, GI showed significantly low survival estimate compared to CR and AM (Breslow test); b, When clinically unacceptable Charlie cases were included into the failure, only the survival estimates of CR and GI showed a significant difference (Breslow test).

Figure 2. Comparison of survival estimates according to cavity classifications using Kaplan–Meier survival analysis. According to the cavity classifications, the statistical difference in the survival estimates between groups showed a little change a, When clinically unacceptable Charlie cases were not included into the failure, there were significant differences between Class I and Class II, Class I and Class IV, Class II and Class III (Log rank test), and Class 2 and Class V (Breslow test); b, When clinically unacceptable Charlie cases were included into the failure, only the difference in the survival estimates between Class I and Class II and Class II and Class V were statistically significant (Breslow test).

Figure 3. Comparison of survival estimates using Kaplan–Meier survival analysis between with and without including the clinically unacceptable Charlie cases into the failure cases. a, Amalgam restorations showed a marginally different survival estimates (Log rank test); b, Composite resin restorations showed a significantly different survival estimates (Log rank test); c, The survival estimates of glass ionomer restorations were statistically not different (Log rank test).

Table 1. Modified United States Public Health Service (USPHS) Criteria used in this study.

Category	Scale	Criteria
Retention	Alpha	present
	Bravo	partial loss but clinically acceptable
	Charlie	clinically unacceptable partial loss or absent
Color match	Alpha	no mismatch to the adjacent tooth structure
	Bravo	slight mismatch but clinically acceptable
	Charlie	esthetically unacceptable mismatch
Marginal discoloration	Alpha	no discoloration on the margin
	Bravo	superficial discoloration on the margin
	Charlie	deep discoloration penetrated in a pulpal direction
Secondary caries	Alpha	no caries present
	Charlie	caries present
Wear (Anatomic form)	Alpha	anatomy resembles original restoration
	Bravo	anatomy shows change in contour but not requiring replacement
	Charlie	excessive wear with dentin exposure requiring replacement
Marginal adaptation	Alpha	continuity at the margin (no ledge or ditch)
	Bravo	slight discontinuity detectable with explorer but not requiring replacement
	Charlie	marginal ledge or crevice requiring replacement
Postoperative sensitivity	Alpha	Absent
	Charlie	Present

Table 2. Pairwise comparison of survival estimates between cavity classifications when the clinical performance of the restorations in the oral cavity was not considered, that is, when the clinically unacceptable Charlie cases according to the USPHS criteria were not included into the failure.

Material	Cavity	N	Median survival time (year)	Survival rate (%) at		<i>p</i> -value				
				5 year	10 year	Class I	Class II	Class III	Class IV	Class V
AM	I	63	13.7	86.9	73.1	.				
	II	76	8.3	66.5	37.4	0.000				
	V	8	-	-	-	0.394	0.014			
	Total	147	11.8	77.8	57.6					
CR	I	81	10.5	72.2	58.1	.				
	II	94	12.5	71.4	13.0	0.349				
	III	67	-	74.8	-	0.824	0.645			
	IV	27	6.2	73.0	-	0.195	0.654	0.462		
	V	397	11.1	78.1	59.7	0.484	0.109	0.474	0.089	
	VI	10	12.4	-	45.7	0.222	0.164	0.267	0.100	0.232
	Total	676	11.0	76.3	57.1					
GI	I	5	2.8	-		.				
	II	28	3.9	23.6	6.8	0.566	.			
	III	17	6.4	68.5	-	0.016	0.009			
	V	94	11.5	63.3	51.9	0.040	0.024	0.292		
	Total	144	6.8	56.8	44.0					
Total		967	11.0	73.3	55.2					

Pairwise comparison of amalgam restorations (AM) was performed with Log rank test and those of Composite resin and Glass ionomer were done with Breslow test.

Table 3. Pairwise comparison of survival estimates between cavity classifications when the clinically unacceptable Charlie cases according to the USPHS criteria were included into the failure.

Material	Cavity	N	Median survival time (year)	Survival rate (%)		<i>p</i> -value				
				5 year	10 year	Class I	Class II	Class III	Class IV	Class V
AM	I	63	10.0	79.7	50.3	.				
	II	76	7.9	62.5	33.8	0.010				
	V	8	11.8		-	0.102	0.027			
	Total	147	8.9	72.1	45.7					
CR	I	81	5.0	53.6	43.2	.				
	II	94	7.8	61.9	23.0	0.439				
	III	67	9.3	65.4	-	0.907	0.538			
	IV	27	4.8	37.6	-	0.502	0.984	0.795		
	V	397	10.9	76.2	55.4	0.009	0.001	0.045	0.051	
	VI	10		71.8	38.1	0.394	0.262	0.440	0.293	0.641
	Total	676	9.7	70.9	48.4					
GI	I	5	2.8	-	-	.				
	II	28	3.9	23.6	6.8	0.566	.			
	III	17	6.4	68.5	17.9	0.019	0.010			
	V	94	10.3	60.3	49.7	0.047	0.030	0.330		
	Total	144	6.4	55.2	41.7					
Total		967	9.3	68.5	47.1					

All pairwise comparison were performed with Breslow test.

Table 4. Prognostic variables affecting the survival estimates of the restorations and their contribution according to the Cox proportional hazards model.

	Without considering USPHS ratings			With considering USPHS ratings		
	Wald	Odds ratio	<i>p</i> -value	Wald	Odds ratio	<i>p</i> -value
Age	38.647		0.000	18.461		0.010
10		1.00			1.00	
20		0.32	0.013		0.60	0.216
30		0.18	0.000		0.36	0.009
40		0.17	0.000		0.39	0.015
50		0.37	0.009		0.59	0.145
60		0.39	0.014		0.60	0.176
70		0.53	0.160		0.84	0.684
80		-	0.947		-	0.945
Tooth group	25.586		0.000	28.170		0.000
Incisor		1.00			1.00	
Premolar		1.25	0.144		1.30	0.064
Molar		2.16	0.000		2.13	0.000
Diagnosis	21.435		0.000	14.470		0.002
Primary reason		1.00			1.00	
Replace		1.42	0.070		1.22	0.275
Pulpal problems		1.83	0.193		2.00	0.83
Esthetics		5.79	0.000		3.65	0.001
Cavity classification	14.210		0.014	16.178		0.006
Class I		1.00			1.00	
Class II		2.02	0.001		1.52	0.020
Class III		1.37	0.313		1.08	0.763
Class IV		1.44	0.451		1.27	0.564
Class V		1.27	0.286		0.85	0.359
Class VI		0.99	0.989		0.89	0.828
Materials	13.587		0.001	13.005		0.001
Amalgam		1.00			1.00	
Composite resin		1.674	0.010		1.71	0.002
Glass ionomer		2.263	0.000		1.98	0.001
Sex	11.652		0.001	7.123		0.008
Male		1.00			1.00	
Female		0.636	0.001		0.73	0.008

Operator	11.004		0.004	12.439	0.002
Professor		1.00		1.00	
Resident		1.45	0.065	1.43	0.008
Student		1.87	0.001	0.83	0.301
Systemic disease	1.992		0.158	3.423	0.064
Absence		1.00		1.00	
presence		0.845	0.158	1.22	0.064

Figure 1. Comparison of survival estimates according to restorative materials using Kaplan-Meier survival analysis.

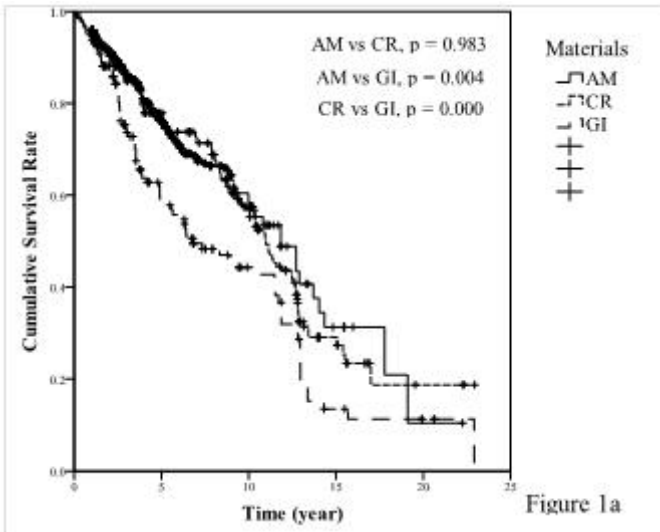


Figure 1a

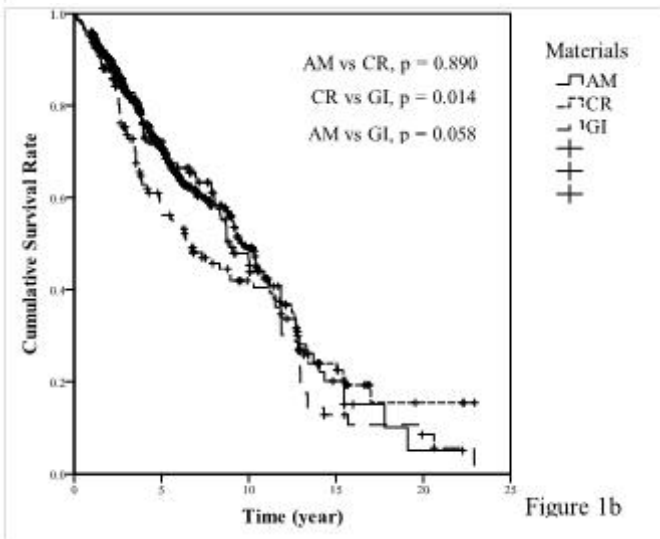


Figure 1b

Figure 2. Comparison of survival estimates according to cavity classifications using Kaplan-Meier survival analysis.

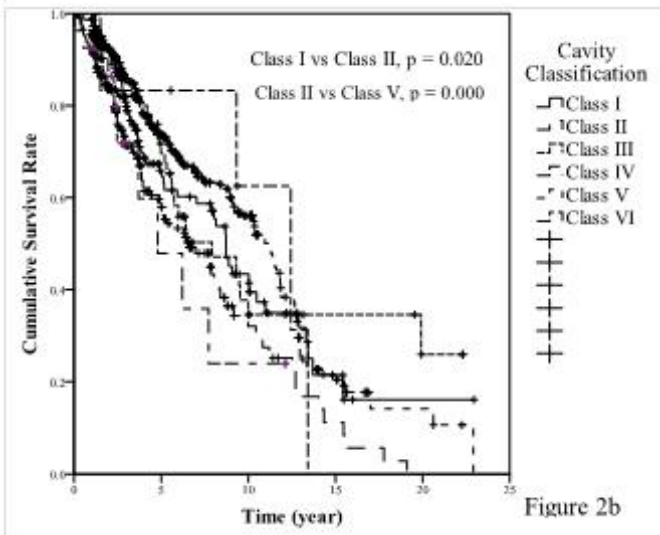
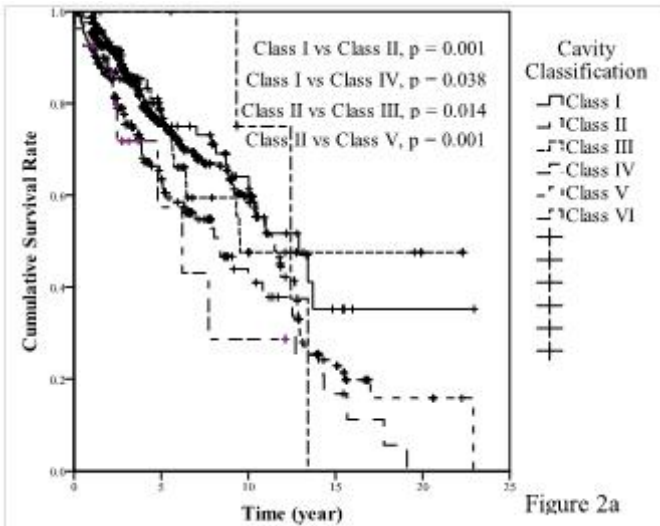


Figure 3. Comparison of survival estimates using Kaplan-Meier survival analysis between with and without including the clinically unacceptable Charlie cases into the failure cases.

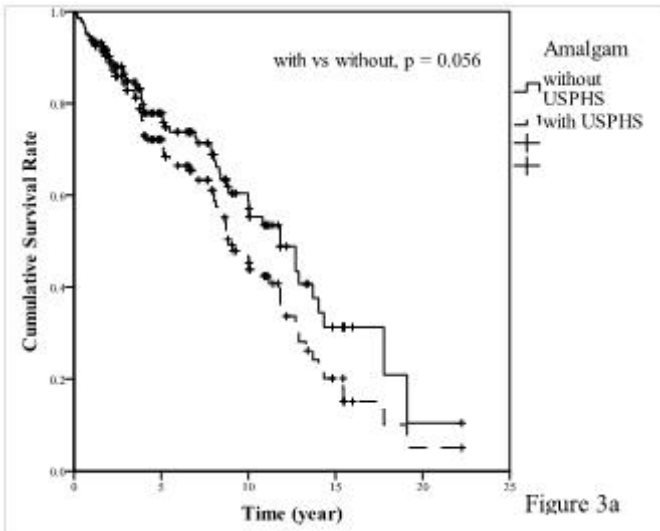


Figure 3a

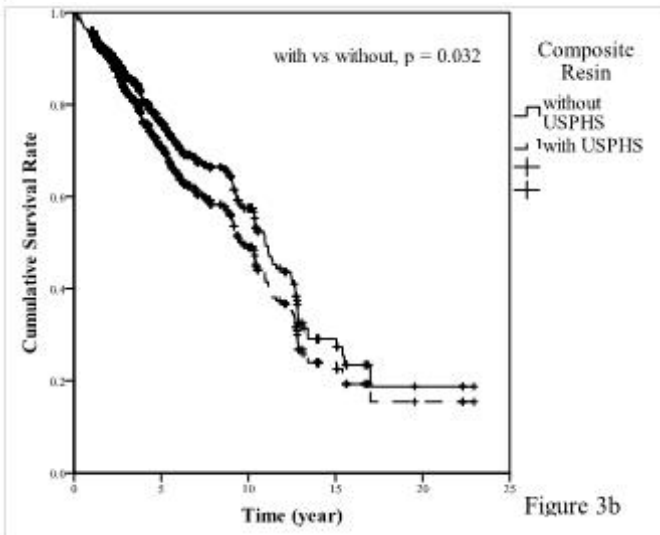


Figure 3b

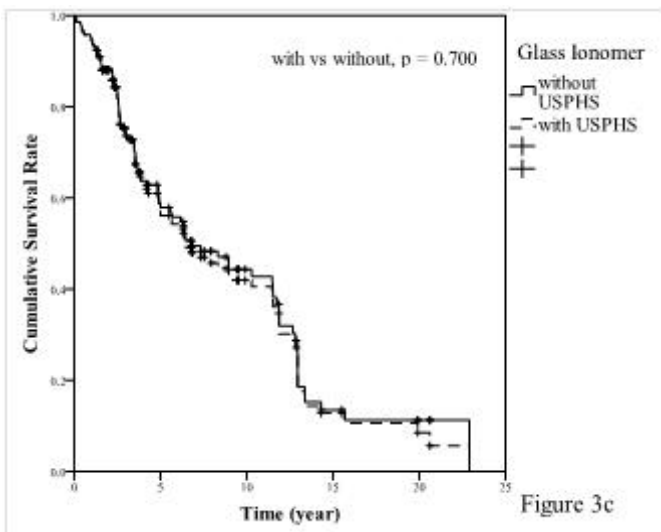


Figure 3c

국문초록

직접수복물의 생존분석에서 임상적 평가 성적이 미치는 영향

서울대학교 치의학대학원

(지도교수 조 병 훈)

김 규 리

1. 연구목적

대부분의 후향적 연구에서 수복물의 임상적 상태는 생존 분석에서 고려되지 않았다. 본 연구에서는 직접수복물의 수명과 예후에 영향을 미치는 변수들을 생존분석 하는 과정에서 modified USPHS criteria에 따라 임상적으로 적합하지 않다고 판정된 증례들을 실패로 간주하는 방법의 영향에 대해 조사하였다.

2. 연구대상 및 방법

967개의 직접 수복물이 평가되었다. 204개의 재치료 수복물의 자료는 치료 기록으로부터 수집되었고, 763개의 구강 내에 기능하고 있던 수복물의 임상적 상태는 modified USPHS criteria를 기준으로 두 명의 관찰자에 의해 평가되었다. 수복물의 수명과 예후에 영향을

미치는 변수들은 Kaplan-Meier 생존분석과 Cox 회귀 변수를 이용하여 임상적으로 적합하지 않다고 판정된 증례들을 포함할 때와 포함하지 않을 때를 비교하여 분석하였다.

3. 결론

아말감, 복합레진, 글래스 아이오노머의 생존 중위수는 각각 11.8년, 11.0년, 6.8년이였다. 글래스 아이오노머는 복합레진과 아말감에 비해 현저히 수명이 낮게 나타났다. 임상적으로 적합하지 않은 증례들을 실패로 포함시켜 분석하였을 때는 생존 중위수가 각각 8.9년, 9.7년, 6.4년으로 각각 감소하였다. 임상적 상태를 고려하기 전, 후에 차이를 보인 수복 재료는 복합레진 뿐이었다.

임상적 상태를 고려하거나, 고려하지 않았을 때의 수명이나 예후에 영향을 미치는 변수는 유사해 보였으나, 복합레진의 수명은 통계적 차이를 보였으며 술자 군의 상대적 위험도는 반대의 결과로 나타났다. 향후 이루어질 후향적 연구의 고안에 있어서 임상적 평가의 포함이 필요하다.

주요어 ; 임상시험, 후향적 연구, 수명, 직접수복물, USPHS criteria, 아말감, 복합레진, 글래스 아이오노머

학번 : 2009-22660