



저작자표시-비영리-변경금지 2.0 대한민국

이용자는 아래의 조건을 따르는 경우에 한하여 자유롭게

- 이 저작물을 복제, 배포, 전송, 전시, 공연 및 방송할 수 있습니다.

다음과 같은 조건을 따라야 합니다:



저작자표시. 귀하는 원저작자를 표시하여야 합니다.



비영리. 귀하는 이 저작물을 영리 목적으로 이용할 수 없습니다.



변경금지. 귀하는 이 저작물을 개작, 변형 또는 가공할 수 없습니다.

- 귀하는, 이 저작물의 재이용이나 배포의 경우, 이 저작물에 적용된 이용허락조건을 명확하게 나타내어야 합니다.
- 저작권자로부터 별도의 허가를 받으면 이러한 조건들은 적용되지 않습니다.

저작권법에 따른 이용자의 권리는 위의 내용에 의하여 영향을 받지 않습니다.

이것은 [이용허락규약\(Legal Code\)](#)을 이해하기 쉽게 요약한 것입니다.

[Disclaimer](#)

A DISSERTATION  
FOR THE DEGREE OF MASTER

**Development of feline dental hygiene chew  
considering the anatomical features of dentition**

고양이의 해부학적 치아 구조를 반영한  
구강 위생 껌 (dental hygiene chew) 의 개발

by

**Boyun Kim**

MAJOR IN VETERINARY CLINICAL SCIENCES  
DEPARTMENT OF VETERINARY MEDICINE  
GRADUATE SCHOOL  
SEOUL NATIONAL UNIVERSITY

**August, 2019**

**Development of feline dental hygiene chew  
considering the anatomical features of dentition**

by

**Boyun Kim**

Supervised by

**Professor Kangmoon Seo**

Thesis

Submitted to the Faculty of the Graduate School

of Seoul National University

in partial fulfillment of the requirements

for the Degree of Master

in Veterinary Medicine

**April, 2019**

Major in Veterinary Clinical Sciences

Department of Veterinary Medicine

Graduate School

Seoul National University

**June, 2019**

**Development of feline dental hygiene chew  
considering the anatomical features of dentition**

고양이의 해부학적 치아 구조를 반영한  
구강 위생 껌(dental hygiene chew)의 개발

지도교수 서 강 문

이 논문을 수의학 석사 학위논문으로 제출함  
2019 년 4 월

서울대학교 대학원  
수의학과 임상수의학 전공  
김 보 윤

김보윤의 석사학위논문을 인준함  
2019 년 6 월

위 원 장 \_\_\_\_\_ (인)

부위원장 \_\_\_\_\_ (인)

위 원 \_\_\_\_\_ (인)

# **Development of feline dental hygiene chew considering the anatomical features of dentition**

**Supervised by**

**Professor Kangmoon Seo**

**Boyun Kim**

Major in Veterinary Clinical Sciences,

Department of Veterinary Medicine Graduate School,

Seoul National University

## **ABSTRACT**

The purpose of this study was to develop effective dental hygiene chews for cats based on the anatomical features of the dentition and patterns of chewing motion.

All cats were volunteered for dental prophylaxis followed by dental impressions using yellow stone and alginate under general anesthesia. Twenty parameters related to dentition were defined in order to compare dental impressions using digital caliper. For the chewing-motion study, patterns of chewing motion were identified based on recordings made with a digital camera. Ten cats (4 domestic shorthairs, 2 Russian blues, 1 American shorthair, 1 Persian, 1 Turkish Angora, and 1 Devon Rex) were recruited for the study.

The parameters related to teeth and oral size were similar among the studied cats. Chewing motion can be described as more of a guillotine-like motion rather than a crushing motion, with cats chewing 3-7 times before swallowing. The chewing pattern of cats involves shearing for a short period of time followed by immediate swallowing. Therefore, the overall size of the dental hygiene chew could be determined based on the measurement of the oral size for inducing chewing. The surface details of the dental hygiene chew could be designed for prevention and removal of dental calculus and plaque in cats considering the anatomical teeth parameters.

Dental hygiene chews customized for cats considering the different anatomical features of their teeth might be effective for oral care.

---

**Key words: cat, chewing motion, dental hygiene chew, dentition of anatomical feature, periodontal disease**

**Student number: 2017-23913**

# CONTENTS

<b>INTRODUCTION</b> .....	1
<b>MATERIALS AND METHODS</b> .....	3
1. Experimental animals .....	3
2. Anesthesia .....	4
3. Measurements .....	5
4. Chewing motion analyses .....	7
5. Modeling of dental hygiene chew .....	7
<b>RESULTS</b> .....	8
<b>DISCUSSION</b> .....	13
<b>CONCLUSIONS</b> .....	18
<b>REFERENCES</b> .....	19
<b>ABSTRACT IN KOREAN</b> .....	21

## INTRODUCTION

Periodontal diseases, such as gingivitis and periodontitis, are inflammatory diseases induced by plaque in the tissues supporting teeth (Ingham *et al.*, 2002b). Periodontal disease is one of the most common oral diseases in small animal medicine (Capik, 2011). About 80% of dogs and 70% of cats aged two years and above have various types of periodontal disease (Brook, 2013). The importance of dental care in cats is increasing as the awareness of feline dental disease increases. Cats that are severely affected by periodontal disease are reluctant to eat or drink due to severe pain (Ingham *et al.*, 2002b). Studies revealed that small dogs were more vulnerable than large dogs to periodontal disease because of their small teeth, short interdental space, decreased oral chewing, and shorter teeth roots (Brook, 2013; Colin and Harvey, 2002; Gioso *et al.*, 2001).

To manage the dental health of companion animals, owners use many methods, such as brushing teeth, dental hygiene chews, and chewing toys (Bjone *et al.*, 2005; Ingham *et al.*, 2002b). Especially for dogs, a variety of products for calculus removal including dental hygiene chews have been developed and the effectiveness of plaque removal has been demonstrated by scientific research (Noh *et al.*, 2014). On the other hand, there are few products available for calculus removal and dental hygiene in cats. The research on dental hygiene chews for cats has been carried out only to measure the effects of the ingredients on the removal of plaque and calculus. This was studied for human dental hygiene purposes and showed that the shape and size of teeth could affect the accumulation of plaque and calculus (Colin *et al.*, 2002). Unlike dogs, cats are obligate carnivores, and both the number and role of their teeth



are different from those in dogs. In previous studies, it was shown that physical calculus removal methods for cats such as brushing teeth could prevent periodontitis, and that foods with abrasive and hard textures could effectively prevent plaque and calculus formation if effective contact was made between the food and surface of the teeth (Ingham *et al.*, 2002a; 2002b). Studies also revealed that dental health could be improved with increased chewing time and increased number of chewing cycles (Beynen, 2011; Gorrel and Bierer, 1999; Gorrel *et al.*, 1998; Hennes *et al.*, 2006; Holmstrom *et al.*, 2005).

Using the same equation for the average mouth scoring system for all species is not reasonable, because each animal species has different sizes of teeth and mouth size (Colin and Harvey, 2002). There are many cat-related products for calculus removal, but no scientific studies have been performed for analyzing the anatomical features of dentition in cats. Therefore, measurement of the size and shape of cats' teeth may be necessary to increase the efficacy of dental care interventions.

The purpose of this study was to investigate the oral structure and mastication mechanism of cats to aid in designing the shapes and materials of dental hygiene chews to effectively remove calculus in cats.

# **MATERIALS AND METHODS**

## **1. Experimental animals**

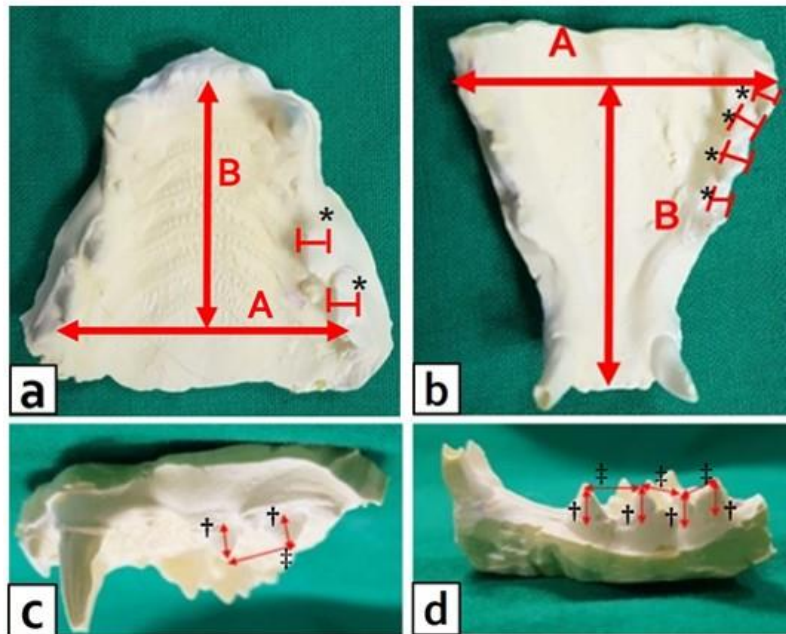
Ten cats were recruited for the study with informed consent from their owners. There was no restriction on breeds recruited. Age was restricted to one year or older as far as possible to exclude the variance related to age. Cats with dental diseases such as teeth loss were also excluded. This research was approved by the Institutional Animal Care and Use Committee of Seoul National University (SNU-190116-2).

## **2. Anesthesia**

Blood analyses and thoracic x-rays were performed for all cats to check their physical health prior to general anesthesia. Cats were premedicated with intravenous (IV) tramadol 2 mg/kg (Huons Tramadol HCl inj. 50 mg/mL; Huons Co., Ltd, Chung-buk, Republic of Korea) and medetomidine 20 µg/kg (Domitor® 0.2 mg/mL; Orion Corporation, Espoo, Finland); anesthesia was induced with IV alfaxalone 3 mg/kg (Alfaxan® 10 mg/mL; Jurox Pty Ltd, Rutherford, NSW, Australia) and maintained with isoflurane in 100% oxygen for dental prophylaxis and dental impression.

### 3. Measurement

Yellow stone (Neo Plum Stone<sup>®</sup>; Mutsumi Chemical Industries Co., Ltd, Yokkaich, Japan) and alginate (Selection J Alginate Impression<sup>®</sup>; Youdent Co., Ltd, Chiba, Japan) were used for dental impressions. Teeth-related parameters were directly measured using digital calipers (NA500-200WPS; Blue Bird Inc., Seoul, Korea) in anesthetized cats. Parameters related to oral size were measured in the dental impressions with digital calipers (Fig. 1). 3rd premolar (PM3) and 4th premolar (PM4) of the maxilla, and PM3, PM4 and 1st molar (M1) of the mandible were measured and defined as parameters related to teeth. The height and width of each tooth was estimated, including the rostral and caudal tip of M1. The interdental spaces between the tips of the teeth [PM3-PM4 in the maxilla, and PM3-PM4, PM4-M1 (rostral tip) and M1 (rostral tip)-M1 (caudal tip) in the mandible] were also measured. As occlusion only occurs in the premolar and molar region, the distance from the tip of PM3 to the caudal tip of M1 in the mandible was measured. Parameters related to oral size were the length between the buccal surface of M1 bilaterally (A) and the length from the mid-point of A to the posterior surface of the incisors (B) in the maxilla and mandible (Fig. 1). The A/B ratio was calculated and the measurements were presented as mean with standard deviation.



**Fig. 1.** The parameters measured using digital calipers. a: maxilla A, B and width of maxillary PM3 and PM4(\*). b: mandible A, B and width of mandibular PM3, PM4 and M1(\*). c: the height of maxillary PM3 and PM4(†), and the interdental space between the tips of each tooth(‡); PM3 and PM4. d: the height of the mandibular PM3, PM4 and M1(†), and the interdental space between the tips of each tooth(‡); PM3 and PM4, PM4 and the rostral tip of M1 and the rostral tip and the caudal tip of M1.

#### **4. Chewing motion analyses**

To analyze the patterns of chewing motion, videos were recorded during chewing using a digital camera. Lateral and frontal views were recorded. The patterns of chewing motion and total chewing time before swallowing were analyzed by reviewing the videos.

#### **5. Modeling of dental hygiene chews**

Dental hygiene chews considering the anatomical features of the teeth and chewing motion was designed for cats. For image modeling, 3D modeling tool (Rhino<sup>®</sup>, Robert McNeel & Associates, Seattle, WA, USA) was used.

## RESULTS

In this study, 10 cats of 6 different breeds were included: four domestic shorthairs, two Russian blues, one American shorthair, one Persian, one Turkish Angora, and one Devon Rex, all of which were common breeds that accounted for a large proportion of companion cats in Korea. There were no remarkable findings on pre-anesthesia physical examination in any of the cats. Twenty parameters related to teeth and oral size of the 6 breeds were compared and analyzed. In the maxilla, A was  $36.85 \pm 2.94$  mm, and B was  $34.40 \pm 3.34$  mm. In the mandible, A was  $30.86 \pm 2.87$  mm, and B was  $31.80 \pm 2.09$  mm. The A/B ratio was 1.07 for the maxilla and 0.93 for the mandible. The largest size of maxilla and mandible in measured cats was 42.0 mm and 34.5 mm. The height of PM3 in the mandible was the lowest ( $3.40 \pm 0.74$  mm), and caudal part of M1 in the mandible was the highest ( $4.50 \pm 0.62$  mm). The width of M1 in the mandible was the smallest ( $2.08 \pm 0.06$  mm), and PM4 in the mandible was the largest ( $2.17 \pm 0.04$  mm, Fig. 1).

The cats had the following dentition in the maxilla; three pairs of incisors, one pair of canines, three pairs of premolars and one pair of molars. The dentition of the mandible was the same as that of the maxilla, except that there were two pairs of PMs. All premolars and molars had highly sharpened tips. The lateral views of the dentition showed that the tips of the upper and lower teeth were not in contact with each other during occlusion. Occlusion was observed mainly between PM3 and PM4 in the maxilla and all PMs and M1 in the mandible. The length of the interdental space between PM3 and PM4 in the maxilla was  $7.83 \pm 0.85$  mm, while the length

of the interdental space between PM3 and PM4 in the mandible was  $6.65 \pm 1.31$  mm. The length of the interdental space between PM4 and the rostral tip of M1 was  $3.80 \pm 0.58$  mm, and the length of the interdental space between the rostral tip and caudal tip of M1 in the mandible was  $5.25 \pm 0.48$  mm. The longest length of dental occlusion region in measured cats was 18 mm and the mean length was  $15.70 \pm 1.77$  mm (Fig. 2).

Analysis of the chewing mechanism revealed that the cats first took the food with the incisors and directly moved it to the premolars and molars for chewing. Usually the cats chewed the food 3 to 7 times before swallowing; this depended on the material and size of the food. The chewing motion was more of a guillotine-like motion rather than a crushing motion. The initial chewing work was the most significant, involving force for breaking the food. The later chewing work provided additional assistance in breaking down the smaller parts of the food. The incisors and canines were rarely used in the chewing exercises.

Based on the above criteria, four types of dental hygiene chews for cats could be designed. The first model was designed with an overall size of 18 mm, taking into account only the length of the occlusion region. The second, third and fourth models had the overall size of 45 mm considering the oral size and 18 mm in height considering the dental occlusion region. The difference between the three models was the appearance of the surface. The surface shape of the models was designed with consideration of the tooth size (Fig. 3).



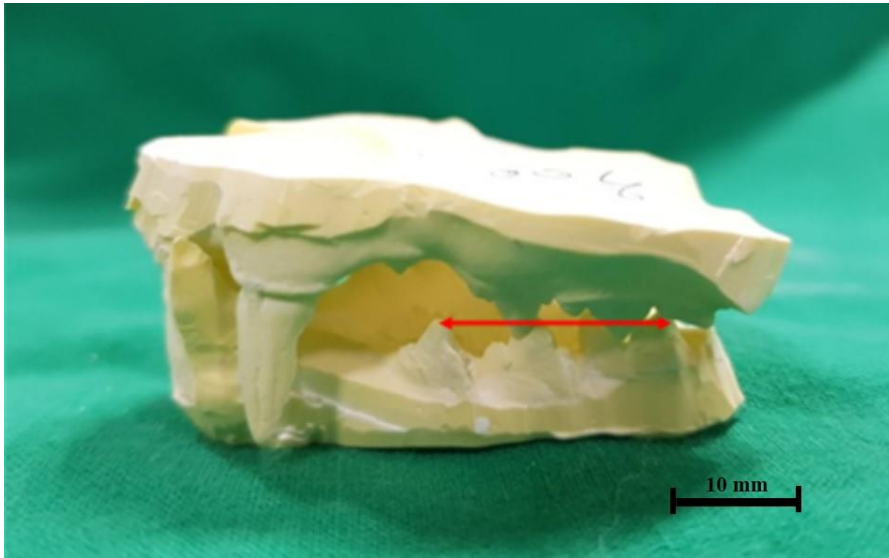
**Table 1.** Measurements of each parameter of teeth size and oral size using a digital caliper (mm)

Parameters	Breed	*DSH	Russian blue	DSH	DSH	DSH	Russian blue	*ASH	Persian	Turkish angora	Devon rex	Average
		Maxilla	height	5.00	3.00	4.00	5.00	4.00	4.50	4.50	3.00	3.30
PM3	width	2.15	2.50	2.00	2.15	2.10	2.10	2.10	2.00	2.15	2.05	2.09±0.06
Maxilla	height	5.00	4.00	4.00	5.50	5.00	4.50	4.50	3.00	4.00	3.00	4.25±0.82
PM4	width	2.10	2.15	2.10	2.15	2.00	2.10	2.10	2.00	2.15	2.00	2.09±0.06
Mandible	height	4.50	3.50	4.00	4.00	4.50	3.00	3.00	2.00	3.00	3.00	3.40±0.74
PM3	width	2.20	2.15	2.10	2.25	2.20	2.20	2.15	2.10	2.20	2.10	2.16±0.05
Mandible	height	5.00	4.50	4.00	5.00	5.00	4.00	3.50	3.00	4.50	3.50	4.20±0.71
PM4	width	2.22	2.20	2.15	2.20	2.20	2.20	2.15	2.10	2.20	2.10	2.17±0.04
Mandible	height	4.50	4.00	4.00	5.00	5.00	4.50	4.00	4.00	4.00	3.00	4.20±0.58
M1(ro.)	width	2.10	2.00	2.10	2.10	2.10	2.15	2.10	2.00	2.15	2.00	2.08±0.06
Mandible	height	4.50	4.00	5.00	5.50	5.00	4.50	4.00	4.00	5.00	3.50	4.50±0.62
M1(cd.)	width	2.10	2.05	2.10	2.10	2.10	2.10	2.10	2.05	2.10	2.10	2.09±0.02
Maxilla (PM3-PM4)		9.00	9.00	7.80	8.00	8.50	7.00	7.00	7.50	8.00	6.50	7.83±0.85
Mandible (PM3-PM4)		8.00	6.50	6.50	7.00	7.50	6.50	5.50	9.00	5.50	4.50	6.65±1.31
Mandible (PM4-M1(ro.))		4.00	5.00	4.00	4.00	4.00	3.50	3.50	4.00	3.00	3.00	3.80±0.58
Mandible (M1(ro.)-M1(cd.))		5.00	5.00	5.50	6.50	5.00	5.00	5.00	5.00	5.50	5.00	5.25±0.48
Maxilla A		41.50	37.00	37.00	42.00	34.00	35.00	38.00	34.00	36.00	34.00	36.85±2.94
Maxilla B		39.00	36.00	34.00	40.00	32.00	34.00	35.00	30.00	34.00	30.00	34.40±3.34
Mandible A		34.00	32.00	30.50	34.00	31.20	30.00	30.00	24.00	32.00	29.00	30.86±2.87
Mandible B		34.50	31.20	30.10	34.30	32.50	32.00	31.00	31.00	34.00	28.00	31.80±2.09

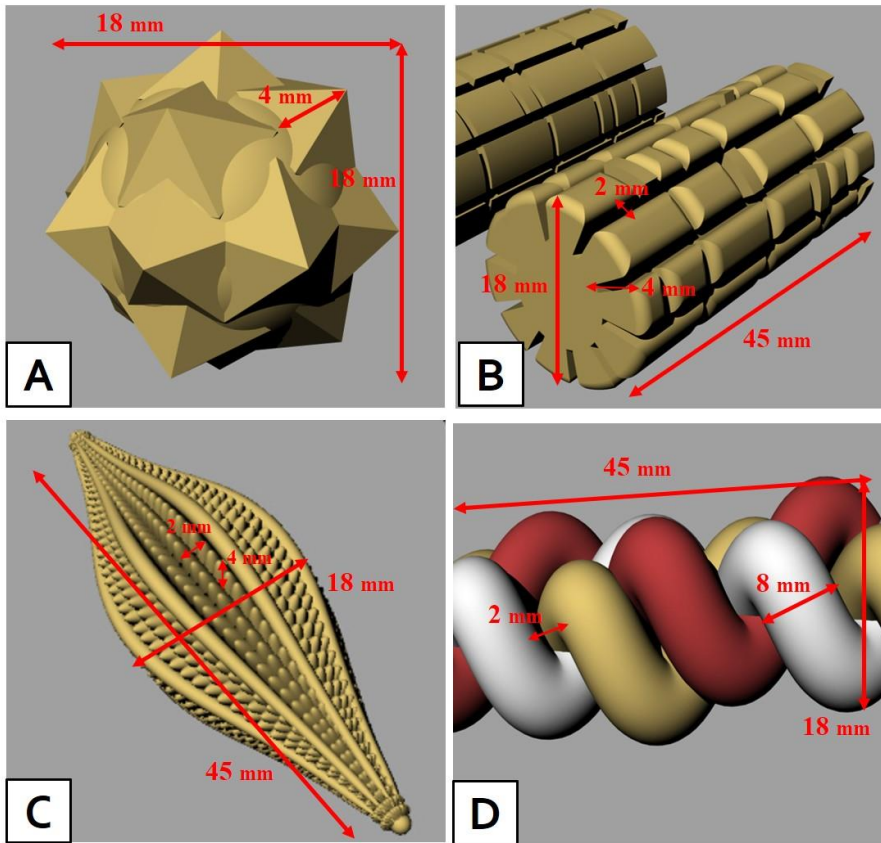
ro.: rostral, cd.: caudal

A: the length between the buccal surface of M1 bilaterally, B: the length from the mid-point of A to the posterior surface of the incisors

\*DSH: domestic shorthair, \*ASH: American shorthair



**Fig. 2.** Representative images of lateral views from a dental impression in cats. The arrow presents the total length of the dental occlusion region; the maxillary PM3 and PM4 and mandibular PM3, PM4 and M1.



**Fig. 3.** The expected models of dental hygiene chew according to the results of this study. (A) one mouth size model; The overall size was determined based on the total length of occlusion region, which was the largest measured as 18 mm. This model chew should not be swallowed at once. (B), (C) and (D) the width of dental hygiene chew was determined based on the widest length of oral size measured as 45 mm. The height of chew was determined based on the total length of occlusion region measured as 18 mm. The distance between the protrusions was determined as 2 mm considering width of tooth. (D) the protrusion width was determined as 8 mm considering the length of interdental space.

## DISCUSSION

Cats have a relatively prolonged lifespan following the development of veterinary medicines (Colmery, 2005). Owners' concerns about their health has also increased. Of the various health care concerns, the oral health care of companion animals is very important but difficult to manage. Cats are particularly sensitive to stress, so their oral health care is more difficult to maintain than it is in humans or in dogs. It has been proven that daily brushing of a cat's teeth reduces dental plaque and calculus in their teeth and prevents gingivitis and periodontitis, but practically it is difficult for the owner to maintain the oral care of the cat (Ingham *et al.*, 2002b). In dogs, many reports have already been published showing the effectiveness of dental hygiene chews for oral care (Beynen, 2011; Colmery, 2005; Gorrel and Bierer, 1999; Gorrel *et al.*, 1998; Hennet *et al.*, 2006), and various products are actually used in the clinical field. Generally, the friction created between the dental hygiene chew and the tooth surface is known to be an important mechanism to remove plaque and calculus (Beynen, 2011). In cats, it has also been proven that products of abrasive and rough materials are effective in removing plaque on the surface of teeth with the same mechanism (Ingham *et al.*, 2002a). Therefore, this study was conducted to design dental hygiene chews for cats considering the anatomical characteristics of the dentition.

In dogs, there were significant differences in the size and shape of the oral cavity between the dolichocephalic and brachycephalic breeds (Noh *et al.*, 2014). Thus, to achieve sufficient physical friction at the tooth surface, the size and shape of the dental hygiene chews must be different according to the skull type of the breeds (Noh

*et al.*, 2014). According to the results of this study, however, there was not much difference when comparing the teeth sizes and oral sizes of the six cat breeds. Even the Persian cats, which represent the brachycephalic breed, did not have much difference in teeth size and oral size when compared to other breeds included. Therefore, unlike dogs, only one type of dental hygiene chew will be sufficient for cats.

Cats are obligate carnivorous animals. For cats, the premolars and the molars play the main role in the chewing activity. They resemble a scissor's blades, and cats use them to cut and tear the food. The appearance of such teeth induces less frequent chewing movements. Even smaller food pieces are not chewed but swallowed easily one at a time in cats. In order to remove plaque and calculus from teeth, dental hygiene chews need to physically scrape the surface of the teeth, so they should be designed to encourage more chewing work from the cats.

The total size of the teeth and oral cavity, as measured with digital calipers, could be effectively used in the design of dental hygiene chew. To encourage chewing activity, the first value to be considered was the overall size of the chews, which was related to the length of the dental occlusion region that was primarily responsible for chewing activity. It has been confirmed that the dental occlusion region consists of the maxillary PM3 and PM4, and the mandibular PM3, PM4, and M1 (Fig. 2). The overall size of the chews should be larger than the dental occlusion region so that minimal chewing activity could be induced without swallowing at once and all involved teeth could be scratched. In this study, the length of the average dental occlusion region of the cats was 15.70 mm, but the length of the longest occlusion

region of the cats was 18 mm. The dental hygiene chews should theoretically be bigger than the average of 15.70 mm. However, the size of the expected dental chew was determined to be 18 mm, the longest length measured, since all cats have to induce chewing activity and stimulate all teeth. The second value to be considered for designing a dental hygiene chew to encourage more chewing activity in cats was the oral size; the length between the buccal surfaces of M1 bilaterally (A) and the length from the mid-point of A to the posterior surface of the incisors (B) in the maxilla and mandible. If the chews were larger than the length of the occlusion region but less than A and B, it could be inserted into the mouth at once, which would not encourage a large amount of chewing activity, depending on the cat. In this study, the A / B ratio of the maxilla and mandible was close to 1, and the mean of the widest width measured in cats was 36.85 mm. However, the largest oral size among the measured cats was 42 mm, which might be difficult to induce more chewing activity for cats with a larger oral size, considering only the average size. Dental hygiene chews should be designed longer than 42mm so that all cats were bigger than their mouth size and could not bite into the mouth.

An important feature of dental hygiene chews is that they cause as much abrasion on the tooth surface as possible. Therefore, it is necessary to increase the area of the friction surface between the dental hygiene chew and tooth surface (Ingham *et al.*, 2002a; 2002b). The surface of the chew could be designed to protrude so that more abrasion occurs between the tooth surface and the crevices of the chews. The height of protrusion should be no longer than 4 mm according to the heights of the teeth, as it could irritate and damage the cat's own gums if it was more than the tooth height.

Considering the width of the tooth, the length between the protrusions could be 2 mm to allow the tooth to enter the crevice space, which would induce each protrusion to make contact between the tooth surface and the dental hygiene chew surface.

Based on the above criteria and the measurement results, four types of dental hygiene chews for cats could be designed. The first model was designed to be portably used as a snack, while the overall size encouraged the chewing activity in relation to the length of the dental occlusion region. The overall size was 18 mm and the surface were designed with a star candy-shaped so that the protrusions could physically scraped the tooth surface. In order to induce more chewing activity, the overall size of dental hygiene chew could be considered in relation to oral size. The overall sizes of the second, third, and fourth models were determined by the measured oral size and the dental occlusion region. The width and height of the models were 45 mm and 18 mm. The difference between the three models was the appearance of the surface. The second model was a wooden shell-shaped surface, the third model was a toothbrush-shaped surface and the fourth model was a pretzel-shaped surface. It was designed to have crevices on the surface of the models so that the tooth could enter into the crevices and physically scratch the tooth surface. The surface of the fourth model was made with pretzel-shaped protrusions, the length between the protrusions was set to 8 mm considering the length of the interdental space (Fig. 3).

The limitation of this study was the small sample number of cats. As more samples are studied, statistically more accurate results might be obtained. It is also necessary to validate these results in a greater number of cat breeds. Unlike dogs,

dolichocephalic and brachycephalic breeds of cat are not clearly distinguishable; hence, it is important to compare a variety of breeds and identify the exact differences in each breed. In order to develop an effective dental hygiene chew, it is also necessary to study the ingredients of chew, for not only the shape of the chew, but the practical aspect of the ingredients should be considered. Studies revealed that materials to create abrasion at the tooth surface during chewing were effective to eliminate dental calculus (Ingham *et al.*, 2002a; 2002b). In addition, the model should be designed specifically to induce chewing activity and should be made of ingredients that are easy to digest considering the possibility of the device to be swallowed during the chewing process. It is also necessary to increase accessibility of dental hygiene chews with a more favorable taste to cats.

Furthermore, the four models of dental hygiene chews made by considering all these factors should be adapted, and further study on their clinical efficacy in cats with dental calculus should be needed.



## **CONCLUSIONS**

The oral size and the teeth sizes of cats included in this study were very similar. The overall size of dental hygiene chews could be determined based on the measurements of the oral size. Furthermore, it was recommended that the surface details of the dental hygiene chews be designed taking into consideration anatomical teeth parameters, in order to remove and prevent dental calculus and plaque in cats.

## REFERENCES

- Beynen AC, 2011. Incorporation of cellulose into a chew treat for dogs increases elasticity and chewing time. *Animal Veterinary Sciences* 6, 117-120.
- Bjone S, Brown W, Billingham J, 2005. Influence of chewing on dental health in dogs. *Proceeding of the the Australian Veterinary Association Annual Conference, Gold Coast*, 16-19.
- Brook AN. *Veterinary Periodontology*, Ames (IA), 2013. Wiley-Blackwell, 51.
- Capik I, 2011. Periodontal health vs. various preventive means in toy dog breeds. *Acta Veterinaria Brno* 79, 637-645.
- Colin E, Harvey, 2002. Shape and size of teeth of dogs and cats-Relevance to studies of plaque and calculus accumulation. *Journal of Veterinary Dentistry* 19, 186-195.
- Colmery B III, 2005. The gold standard of veterinary oral health care. *Veterinary Clinics of North America; Small Animal Practice* 35, 781–787.
- Gioso MA, Shofer F, Barros PS, 2001. Mandible and mandibular first molar tooth measurements in dogs: Relationship of radiographic height to body weight. *Journal of Veterinary Dentistry* 18, 65-68.
- Gorrel C, Bierer TL, 1999. Long-term effects of a dental hygiene chew on the periodontal health of dogs. *Journal of Veterinary Dentistry* 16, 109-113.
- Gorrel C, Inskeep G, Inskeep T, 1998. Benefits of a “dental hygiene chew” in maintaining periodontal health in cats. *Journal of Veterinary Dentistry* 15, 135-138.

- Hennet P, Servet E, Venet C, 2006. Effectiveness of an oral hygiene chew to reduce dental deposits in small breed dogs. *Journal of Veterinary Dentistry* 23, 6-12.
- Holmstrom SE, Bellows J, Colmery B, 2005. AAHA dental care guidelines for dogs and cats. *Journal of the American Animal Hospital Association* 41, 277-283.
- Ingham KE, Gorrel C, Bierer TL, 2002a. Effect of a dental chew on dental substrates and gingivitis in cats. *Journal of Veterinary Dentistry* 19, 201-204.
- Ingham KE, Gorrel C, Blackburn JM, Farnsworth W, 2002b. The effect of toothbrushing on periodontal disease in cats. *The Journal of Nutrition* 132, 1740-1741.
- Noh H, Kang S, Lee ER, Kim S, Park S, Kwak J, Seo K, 2014. Development of dental hygiene gum for dogs considering their anatomical features of dentition. *Journal of Veterinary Clinics* 34, 429-433.

# 국 문 초 록

## 고양이의 해부학적 치아 구조를 반영한 구강 위생 껌(dental hygiene chew)의 개발

지도교수 서 강 문

김 보 윤

서울대학교 대학원

수의학과 임상수의학 전공

본 연구는 고양이의 치아 구조의 해부학적 특징과 저작하는 동작을 기반으로 고양이에게 효과적인 구강 위생 껌을 개발하고자 실시하였다.

모든 고양이는 보호자의 동의 하에 진행하였고, 고양이의 품종은 도메스틱 숏 헤어(domestic shorthair) 4마리, 러시아 블루(Russian blues) 2마리, 아메리카 숏 헤어(American shorthair) 1마리, 페르시안(Persian) 1마리, 터키쉬 앙고라(Turkish Angora) 1마리와 데본 렉스(Devon Rex) 1마리로 총 6종의 10마리 고양이가 사용되었다.

고양이들은 전신 마취 하에 치석 제거를 시행하였고 옐로우 스톤(yellow stone)과 알지네이트(alginate)를 사용하여 치아 모형을 제작하였다. 치열과 관련된 20 가지 측정 변수들을 디지털 캘리퍼를 이용하여 치아 모형으로 측정되었다. 또한 저작 운동 연구를 위해 고양이의 저작 동작의 패턴을 디지털 카메라로 녹화하여 평가하였다.

각 고양이의 치아 및 구강 크기와 관련된 측정 부위들은 크게 차이가 있지 않았다. 고양이의 저작 운동은 3 ~ 7 회이고 음식의 크기와 재질에 따라 차이를 보였다. 고양이의 저작 운동 패턴은 음식을 짧은 시간 동안 자르고 즉시 바로 삼켰다. 따라서, 고양이 구강 위생 껌의 전체 크기는 저작 운동을 유도하기 위해 측정한 구강 크기에 기초하여 결정될 수 있었다. 구강 위생 껌의 표면 모양은 고양이의 치석과 치태를 제거하고 예방하기 위해 해부학적인 치아 측정 변수를 고려하여 고안될 수 있었다. 이러한 결과를 바탕으로 4가지 종류의 시제품 모델을 제작하였다.

치아의 해부학적 특징을 고려한 고양이에게 맞춤형 된 구강 위생 껌이 고양이의 구강 관리에 있어서 효과적일 것으로 판단된다.

---

주요어: 고양이, 저작 운동, 구강 위생 껌, 치열의 해부학적 특징, 치주염

학번: 2017-23913