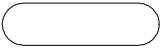


:

(徐正浩)\*



가 . 가 , GDP 가 가,  
 가  
 1,700 , 1 , 1 3 8 .  
 가

■ : , , , , .

2

가

10 20

\* 21

, , ,

.

-

가 .

가 .

, ,

가

가 .

-

가

가

가

, , 가

, ,

가

가

가

‘ - ’

가

1

가

가

1

가

2,100

가 60%

1,300

(< 11> )

- , - ,

, , ,

. 가

가

(計上)

,가

(功過)

(功過)

(功過)

1. 가

가

가

< 1>

30

24.5

가

가

30

170

1970

1985

가

1970

가

가

1970

2.0%

, 70

1.5%

,

80

1%

1%

1997

가

가

30

3.5

가

,

가

가

가

39

,

10

가

1975

2000

4

16

,

21

< 1>

( : , %)

1970	22,271	5,749,301	66.1	1,318,808	70.1	590,382	26.9	23,440	158,604	-	-
1975	32,032	5,599,074	77.2	2,026,823	74.7	1,123,017	25.8	62,866	217,490	12,351	1,519
1980	66,433	5,658,002	95.8	2,471,997	84.5	1,696,792	27.2	151,199	412,404	29,901	4,038
1985	314,692	4,856,752	99.2	2,782,173	90.7	2,152,802	36.4	242,114	950,058	57,698	10,480
1990	414,532	4,868,520	99.8	2,275,751	95.7	2,283,806	33.2	323,825	1,056,126	72,417	14,494
1995	529,265	3,905,163	99.9	2,481,848	98.5	2,157,880	51.4	569,820	1,207,385	93,993	18,735
2000	545,263	4,019,991	99.9	1,860,539	99.5	2,071,468	68.0	913,273	1,686,305	197,436	32,001

: (200lb).  
 = / × 100.

< 1> 1970 66% 1985  
 99% , 1970 70% 1985 90%, 2000  
 99.5% . 27%

68% . 1995  
 , 2000 3 2 .  
 , 80 가

1970 62.5 2000 7115 11 가 (< 2> ).  
 25 1970 가 4 3  
 1995 4 1 , 5% 20% .  
 25 60% 가 .

1980  
 ( , 1987 : 502), 6 1970 6.62 1995  
 10.25 1 2 .  
 , 가 가 .

. GDP 가 가  
 가 가 (投融  
 資)

< 2>

( : %, , )

	25				(6 )	*
1970	73.4	11.5	10.2	4.9	-	62.5
1975	65.5	14.8	13.9	5.8	6.62	98.7
1980	55.3	18.1	18.9	7.7	7.61	140.2
1985	43.4	20.5	25.9	10.2	8.58	355.7
1990	33.4	19.0	33.5	14.1	9.54	389.9
1995	26.6	15.7	38.0	19.7	10.25	519.8
2000	-	-	-	-	-	711.5

: (1996a), (2001a).

\*

2000 31 5,070 30  
 1,450 217 가 (< 3> ). 가 2 8,000  
 23 7,000 85 가 , 가 2 7,000 188 8,000 70  
 가 . 3 가 . 1  
 1 2,000 202 3,000 169 , 108 ,  
 89 , 15 7,000 559 1,000 36 가 .

< 3>

가 .가

( : )

	(10 )	1				가	
							가
1970	145	12	25	32	157	28	27
1975	395	27	40	73	313	65	59
1980	2,018	119	157	150	1,036	234	184
1985	4,600	319	300	398	1,210	424	329
1990	8,524	566	699	787	1,906	943	723
1995	19,215	1,412	1,380	1,785	4,227	1,911	1,408
2000	31,507	2,023	2,690	2,840	5,591	2,387	1,888

: (2001b), (2001a).

가

가 ,가

, 가 .

. 가 가 < 3> 가  
 . < 4> 가 가 가  
 가

< 4>

( : , %)

	가			가가		
1970	311	22	7.2	207	14	6.9
1975	700	48	6.8	616	38	6.2
1980	2,151	126	5.8	2,138	200	9.4
1985	3,804	280	7.4	4,691	555	11.8
1990	8,228	664	8.1	8,227	862	10.5
1995	15,191	1,484	9.8	14,781	1,553	10.5
1999	17,747	1,922	10.8	17,123	1,653	9.7

: (2001b, 2001c).  
 가 = 가 / 가 .

< 4> 가 1970 7.2% 1999 10.8% 3.6%  
 가 , 가가 6.9% 9.7% 2.8% 가 가  
 가 . 가 가 2 2,000 192 2,000 87  
 가 가가 1 4,000 165 3,000 118 가  
 가 . 가 가  
 57 , 83 가 .  
 가

가 1994 17 5 ( , 1994 : 118) , 1997 13 5 26.8% ( , 1997 : 4) , 2000 1

22 1,000 가 7 7,000 ( , 2001. 5 : 10).

가 가 . 가  
 1990 가 3.6  
 ( , 2001 : 147)  
 20 < 3>  
 2000 50 GDP 10%

2.

가 가 < 5> 가  
 GDP, 가  
 가  
 < 5>

( : %, / )

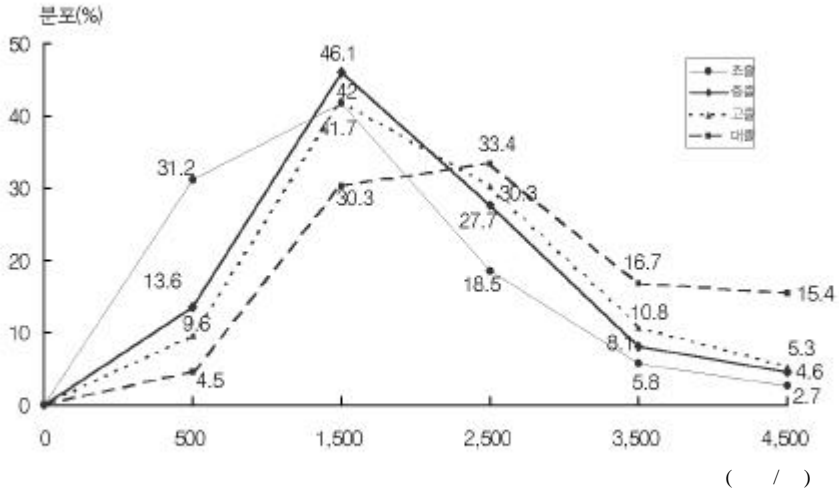
	GDP		가		가		가 <sup>1)</sup>		가 <sup>2)</sup>	
						가		가		
1985	6.5	48.5	2.3	56.8	423.8	7.1	378.8	5.9	9.2	6.6
1990	9.0	67.9	8.5	74.0	943.3	17.2	809.3	16.5	18.8	9.4
1995	8.9	100.0	4.5	100.0	1,911.1	12.3	1,642.5	13.4	11.2	6.4
1996	6.8	103.9	4.9	104.9	2,152.7	12.6	1,837.7	11.9	11.9	6.6
1997	5.0	107.2	4.5	109.6	2,287.3	6.3	1,938.8	5.5	7.0	2.5
1998	-6.7	112.6	7.5	117.8	2,133.1	-6.7	1,815.5	-6.4	-2.5	-9.3
1999	10.9	110.3	0.8	118.8	2,224.7	4.3	1,873.3	3.2	12.1	11.2
2000p	8.8	108.6	2.3	121.5	2,386.9	7.3	2,008.5	7.2	8.0	5.6
	7.26	-	5.04	-	-	12.14	-	11.63	11.76	6.41

: (2001), (2001c), (2001).

- 1) 가
- 2) = / 가 × 100.

< 5> 1985 2000 16 GDP 7.26% 가  
 가 5.04% 가 GDP 가  
 12.14%, 11.63% 가 GDP 가  
 , 5 , ,  
 가  
 가 가  
 GDP 가

. 가 가  
 . 가 가  
 . 가 가  
 . [ 1] 1996 가  
 1,000 가 가 1,000  
 2,000 40% 가 , 2,000 가 가 1,000  
 가



자료 : 통계청, 도시가계연보(1998)에 의거 재작성

[ 1] 가 (1996)





가 가

가 가

(非農全産業)

1970 , 1970 가  
 20 30% , 1980 가  
 가 , 1987 10  
 가 1997

< 7> 1  
 1985 32 4,000 2000 172 7,000 5.3 < 6> 가  
 5.6 가 가  
 가

< 7>

( : / )

									20-24	30-34	40-44	50-54	60	
1980	176	224	99	147	275	124	181	265	413	96	197	221	247	296
1985	324	397	190	270	484	226	303	393	686	165	327	370	390	441
1990	642	753	403	591	939	477	569	668	1,056	335	565	623	598	586
1995	1,222	1,382	823	1,124	1,553	959	1,100	1,193	1,715	619	1,007	1,107	1,043	886
1999	1,599	1,786	1,131	1,476	1,791	1,157	1,359	1,442	2,164	786	1,285	1,481	1,385	1,112
2000	1,727	1,938	1,225	1,601	1,900	-	-	-	-	-	-	-	-	-

: (2000), (2001).

가 가 가 가  
 1985 , 38 3,000 1995  
 61 5,000 , 1999 80 5,000 < 6>

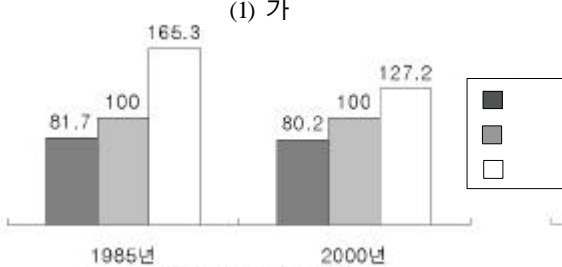
가

가

가 가  
 . [ 2] 가 가  
 가 가 100 , 가 가 1985 165.3  
 2000 127.2 40 . 1985  
 226.4 1999 159.2 70 가 .  
 가 가  
 가 가 가  
 100 74.6 100 85.1 10 .  
 가 가  
 . <  
 7> , 1995  
 43 2000 30  
 84.3% . 1980 53.5% 20 30%  
 가 ,  
 .  
 1980 44.2% 2000 63.2% 1980 10 , 1990 30  
 , 2000 70 .

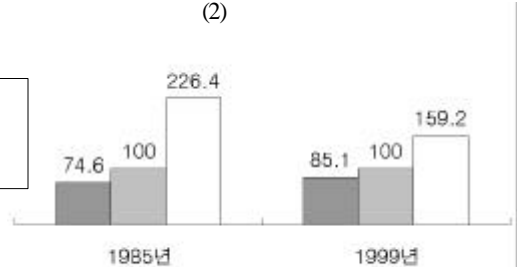
(斜陽)

(1) 가



: < 6>

(2)



: < 7>

[ 2] 가

가 . < 7> 1980  
 1990 40 45

, 40

가

가 1980  
 3D , 40

3.

가

가

< 8>

가 . 2000 1970

17.5 ,

2.3 ,

2.2 ,

6.1 ,

2.0

가

694

가

(離農)

가

가

< 8 >

( : , )

	( )				( )				( )			
1970	484	1,660	34.1	13.4	5,961	101,095	62.1	56.9	1,608	31,207	62.1	42.3
1980	901	3,339	38.4	19.9	6,479	119,064	51.5	47.5	2,103	54,858	65.5	45.1
1990	8,354	18,511	28.6	22.4	6,335	136,800	41.4	35.6	2,474	89,719	50.2	25.4
2000	8,494	28,012	26.3	19.5	5,267	140,000	35.8	28.7	2,731	92,589	38.0	20.1

	( )				( )				( )			( )
1970	889	19,854	58.2	29.7	26	1,170	20.0	87	8,439	18.8	( '75)808	( '75)422
1980	1,353	50,948	59.8	33.3	128	5,488	27.6	96	15,022	27.5	1,108	649
1990	1,683	92,683	52.8	24.6	117	7,382	43.9	118	34,034	31.0	2,998	1,289
2000	1,957	104,351	42.7	19.9	158	11,707	78.0	172	42,641	39.5	7,330	2,412

: (2001b).

, 가 가 . 2000 . 30  
 16 가 , 10 14 38.5% 가  
 , 1970 가  
 3 , 5 , 10, 5 .  
 , 가 , .  
 , 1 .  
 . . 1  
 1 .  
 2000 GDP 0.5% 1 6,844 .  
 (1.4%, \$17,466), (1.1%, \$9,989) OECD 가 OECD  
 ( , 2001 : 9).

1 1970 20 2000 78 ,

1 18.8 39.5 4 , 2

가

< 9 >

	2001	2002	2003	2004	2005	2006
( )	743,490	695,156	632,822	635,432	613,921	611,196
( , 2001 )	-	-48,334	-110668	-108,068	-129,569	-132,294

(2001. 6).

4. (遊休化)

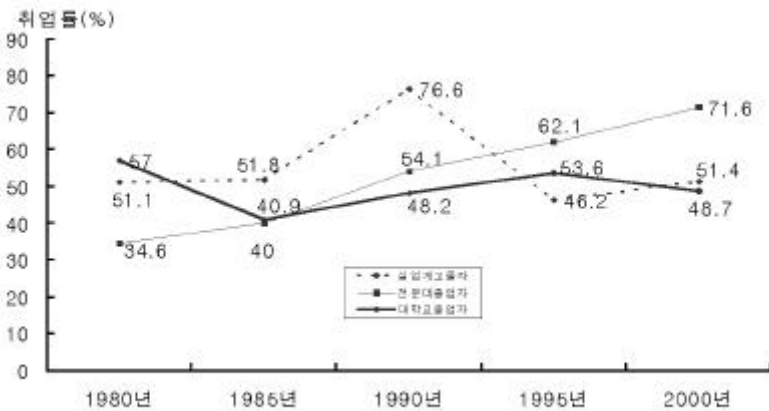
( : 2001).

$$( = \text{ / } \times 100)$$

1

1998

1997 40% 가 ( 「 3 」 )



(2001)

[ 3] 2000 가 51.4%, 가  
71.6%, 가 48.7% .  
3 6% . 가

1990 가  
1980 가 .  
가 ,

가 40 50%  
가가  
1

(死藏)  
가  
[ 3] 1980 , , ,  
1990 , , 2000

(騰落)  
가 .

< 10> 가 1980 1998 .  
75 가 5% 3.8%,  
9.3% . 3 2 .

가 1985 . IMF  
1997 56 ( 2.6%) 1998 146 ( 6.8%)  
가 가 . 3.3% 8.2% 4.9% 가  
3.0% 5.7% 2.7% 가 . 가

< 10> 가 1990 1995 .

< 10>

( : , %)

		15 19	20-24	25 29	30 39	40 49	50 59	60			
1980	748(5.2)	159(13.3)	203(10.3)	107(5.8)	136(3.8)	95(2.9)	45(2.5)	4(0.6)	382(3.8)	307(9.3)	60(6.2)
1985	622(4.0)	79(11.1)	180(9.6)	130(5.2)	116(2.8)	80(2.3)	34(1.6)	3(0.3)	221(2.4)	291(5.9)	109(6.6)
1990	454(2.4)	59(9.2)	126(6.3)	105(3.9)	83(1.6)	48(1.2)	30(1.1)	5(0.4)	100(1.1)	240(3.4)	114(4.4)
1995	420(2.0)	36(8.1)	130(5.9)	86(3.0)	84(1.3)	49(1.1)	28(0.9)	7(0.4)	86(1.1)	226(2.5)	109(2.7)
1996	426(2.0)	32(7.5)	126(5.9)	97(3.4)	86(1.4)	51(1.1)	27(0.9)	7(0.4)	83(1.1)	231(2.5)	111(2.6)
1997	556(2.6)	42(9.9)	149(7.2)	122(4.1)	114(1.9)	73(1.5)	40(1.3)	15(0.7)	119(1.5)	307(3.3)	131(3.0)
1998	1,461(6.8)	86(20.9)	258(14.8)	268(9.3)	359(5.7)	281(5.5)	162(5.2)	47(2.4)	410(5.8)	766(8.2)	285(5.7)
1999	1,353(6.3)	85(19.7)	216(12.8)	236(8.5)	328(5.3)	276(5.2)	162(5.1)	49(2.4)	369(5.2)	713(7.6)	271(5.3)
2000	889(4.1)	61(13.7)	154(9.3)	159(5.7)	204(3.4)	187(3.3)	95(2.9)	29(1.3)	232(3.2)	453(4.7)	204(3.9)

( )  
: (2001d, 2001e).

1.

가

가 .

. , 가 ,

(國富) GDP, 가 ,

가 .

(功過), 가



가 . . . , . . .  
 가 가 . . . 1  
 가 . . . 5  
 2 , 6 , . 3 , 2 4  
 . 16 , 19 , 21 ,  
 23 가 .  
 . , , ,  
 가 가 ,  
 가 2000 .  
 가 . 가  
 가 , .  
 . 2000  
 2,195 60.7% 2,106 , 62.4% 1,314  
 (< 11> ) . 가,  
 1999  
 59 .

< 11> 2000

( : , %)

(A)	15 (B)	(C), ( 가 = C/B)	(D) = C - D			(D) ( )
			( )			
47,275	36,139	21,950(60.7)	21,061(95.9)	13,142	7,919	889(4.1)

: (1996b). (2001)

가 , 가 , ,  
 가 . 가  
 ,

2.

(1), (2) (3)

I = f(c, e, a, l, p, s, .....)

I = f(s)

I^M = sum\_{t=5}^{15} S\_t^M, E^H = sum\_{t=5}^{18} W\_t^H, E^C = sum\_{t=5}^{20} W\_t^C, E^U = sum\_{t=5}^{22} W\_t^U

가 , 가 (c), (e), (a), (l), (p), (s)

가 (1)

(2)

(3)

가 가 가

5 15 11

5 18 , 5 20 , 5 22

18

< 12> 4 2000 가 15 가 7

가 가

< 12>

< 12> 2000 1

( : )

Table with 6 columns and 2 rows. Row 1: 221, 122, 112, 175, 227, 547. Row 2: =, +, +, +, +, .

: (2001. 5).

$$\langle 12 \rangle \quad (3)$$

가 (3)

$$I^M = \sum_{t=5}^{15} S_t^M = S_5 + S_6 + S_7 + \dots + S_{15}$$

$\langle 12 \rangle$  (實數)

$$(122,000 \times 12 \times 2) + (112,000 \times 12 \times 6) + (175,000 \times 12 \times 3) = 2,928,000 + 8,064,000 + 6,300,000 = 17,292,000 \quad (4)$$

292 8,000 , 806 4,000  
 , 630 5 15 11 1,729 2,000

$$(4) + (227,000 \times 12 \times 3) = 25,464,000 \quad (5)$$

$$(5) + (547,000 \times 12 \times 2) = 38,592,000 \quad (6)$$

$$(6) + (547,000 \times 12 \times 2) = 51,720,000 \quad (7)$$

가

가

8 가  $\langle 13 \rangle$

< 13> , , (1999)

( : / )

	19	20	25	30	40	50	19	20	25	30	40	50
	24	29	39	49	59		24	29	39	49	59	
	449	657	835	974	1,012	872	410	550	612	603	590	580
	558	676	869	1,085	1,284	1,135	582	686	805	854	767	852
	519	687	904	1,216	1,581	1,554	587	707	849	1,087	1,282	1,192
	-	858	1,089	1,553	2,152	2,434	-	827	1,026	1,447	1,907	2,162

: (2001).

(s), (x), (a), (e), (y), (p),

(r)

$$E = f(s, x, a, e, y, p, r, \dots) \text{ ———— (8)}$$

. < 13>

가

$$E = f(s, x, y) \text{ ————— (9)}$$

, , , 가 59

$$E^M = \sum_{t=16}^{59} W_t^M, E^H = \sum_{t=19}^{59} W_t^H, E^C = \sum_{t=21}^{59} W_t^C, E^U = \sum_{t=23}^{59} W_t^U$$

$$E^{U_F} = W_{23}^{U_F} + W_{24}^{U_F} + \dots + W_{59}^{U_F} = \sum_{t=23}^{59} W_t^{U_F}$$

< 14> , ,

$$[ \{ 449,000 \times 4 (16 \ 19) \} + \{ 657,000 \times 5 (20 \ 24) \} + \{ 835,000 \times 5 (25 \ 29) \} + \{ 974,000 \times 10 (30 \ 39) \} + \{ 1,012,000 \times 10 (40 \ 49) \} + \{ 872,000 \times 10 (50 \ 59) \} ] \times 12 = 454,032,000$$

$$[ \{ 410,000 \times 4 (16 \ 19) \} + \{ 550,000 \times 5 (20 \ 24) \} + \{ 612,000 \times 5 (25 \ 29) \} + \dots + \{ 580,000 \times 10 (50 \ 59) \} ] \times 12 = 302,160,000$$

$$[ \{ 558,000 \times 1 (19) \} + \dots + \{ 1,135,000 \times 10 (50 \ 59) \} ] \times 12 = 519,876,000$$

$$[ \{ 582,000 \times 1 (19) \} + \dots + \{ 852,000 \times 10 (50 \ 59) \} ] \times 12 = 393,204,000$$

$$[ \{ 687,000 \times 4 (21 \ 24) \} + \dots + \{ 1,581,000 \times 10 (50 \ 59) \} ] \times 12 = 609,336,000$$

$$[ \{ 707,000 \times 4 (21 \ 24) \} + \dots + \{ 1,192,000 \times 10 (50 \ 59) \} ] \times 12 = 512,196,000$$

$$[ \{ 858,000 \times 2 (23 \ 24) \} + \dots + \{ 2,434,000 \times 10 (50 \ 59) \} ] \times 12 = 822,612,000$$

$$[ \{ 827,000 \times 2 (23 \ 24) \} + \dots + \{ 2,162,000 \times 10 (50 \ 59) \} ] \times 12 = 763,176,000$$

가 < 1 > 99%

가

가

가 16 18 ,

16 18 19 20

가 21 22

< 13>

16 18 3 449,000 × 3 × 12 =16,164,000 .  
 410,000 × 3 × 12 =14,760,000 ,  
 16,164,000 +(558,000 +676,000 )× 12 =30,972,000 ,  
 14,760,000 +(582,000 +686,000 )× 12 =29,976,000 ,  
 30,972,000 +(858,000 × 2 × 12 )=51,564,000 ,  
 29,976,000 +(827,000 × 2 × 12 )=49,824,000 .  
 가

가

가

가

(起算日),

가

가

가

가

, 가 ,

가

1

< 14>

< 14> , 1

( : )

				(B)	(B)-(A)					(B)	(B)-(A)
			(A)						(A)		
	17,292	-	17,292	430,380	413,088		38,592	30,972	69,564	609,336	539,772
	17,292	-	17,292	302,160	284,868		38,592	29,976	68,568	512,196	443,628
	25,464	16,164	41,628	519,876	478,248		51,720	51,564	103,284	822,612	719,328
	25,464	14,760	40,224	393,204	352,980		51,720	49,824	101,544	763,176	661,632

< 14>

, 가

1,729 ( )

1 328 ( )

8,600 . ,

3 2 (

) 8 23 ( )

5 2 가 .

2

8,487 ( ) 7 1,933 ( )

4 3,446 가 .

가

가

가

가,

가

< 13>

30

가 40

10

20

가 40

40

50

(credentialism)

(screening)

가

30

가

가

가

가

. 가

1

2,500

3,500

8,000

2

1

4

가

가

가

가

가

가

가







. (1994).

. (2001a).

\_\_\_\_\_. (2001b). 2000

, [http://210, 122, 126.4/.html/frame 2. html.](http://210.122.126.4/html/frame2.html)

\_\_\_\_\_. (2001. 6).

(2001).

(2001).

(1997).

, <http://www.cpb.or.kr/textdata>.

. (2001). “

”, 가

(1987). “

”,

. (1996a).

\_\_\_\_\_. (1996b).

\_\_\_\_\_. (1998). 가

\_\_\_\_\_. (2001a). 가 가

\_\_\_\_\_. (2001b). 가

, [kr/cgi-bin/sws\\_1020.cgi?KorEng](http://kr/cgi-bin/sws_1020.cgi?KorEng).

\_\_\_\_\_. (2001c). 가

, [kr/cgi-bin/sws\\_1020cgi?KorEng](http://kr/cgi-bin/sws_1020cgi?KorEng).

\_\_\_\_\_. (2001d).

, <http://www.nso.go.kr/cgi-bin/sws-999>.

\_\_\_\_\_. (2001e).

\_\_\_\_\_. (2001. 5).

( ), [http://std.kedir.kr/html/frame 2.html](http://std.kedir.kr/html/frame2.html).

. (2001).

, [http://std.kedire.kr/html/frame 2.html](http://std.kedire.kr/html/frame2.html).

. (2001). 2001KLI

. (2001).

\* 7 19 / 1 7 20 / 2 8 20

\* , 21

( , , ), - . 「

」, 「21

」, 「

## Abstract

# **An Analysis on the Economic Effects of the Investment in School Education :Focusing on Wage Differences by School Career**

Se o, Chung-Ho \*

The investment in school education leads to the betterment of educational circumstances, the improvement of one's schooling, the increase in GDP and domestic incomes, and the rise in wages. Furthermore, school education influences on the credentialism and the screening as well as on an accumulation of wealth and a rise in position.

The purpose of this paper is the suggestion of direction of educational investment by means of analyzing economic effects of investment costs including domestic educational expenses and opportunity costs, and wage profits, microscopically.

The result of the analysis is as follows. The educational expenses per head of student including opportunity costs up to the middle school, and up to the university, are 17 million won and a hundred million won, respectively. And total wage sum per capita differentiated by school career is from three hundred million to eight hundred million won. This result implies that one reason of high educational fever exists in economic aspects. In order to increase the effects, the educational investment should be focused on improving the educational quality of professional college and on adjusting the university education to the social needs.

■ **Key Words** : Investment in school education, Credentialism, Screening, Opportunity costs, Social needs.

---

\* The 21st Economy Social Institute, Investigator.